

Visual Paint Assessment Report

For Auten Rd. Hillsborough Township, NJ 08844
 01/24/2024

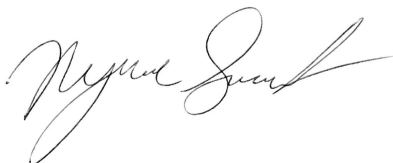
On 01/23/24, LEW Environmental Services, LLC (NJDCA 00015 E) performed a visual paint condition assessment for the presence of deteriorated paint, chips or dust from painting activities and paint residue on floors at Auten Rd., (the “property”) in compliance with NJAC 5:28A. Only the dwelling and common area interiors were included. Exteriors were not part of the assessment. The visual assessment followed the protocols found in HUD’s Visual Assessment Training course.

Deteriorated paint, chips or dust from painting activities and paint residue on floors were observed on the following components/surfaces.

Room	Component	Hazard
Bathroom 1	Door	Deteriorated Paint
Bathroom 1	Door Casing	Deteriorated Paint
Bathroom 2	Door Casing	Deteriorated Paint
Bathroom 2	Door	Deteriorated Paint
Stairwell 1	Wall	Deteriorated Paint
Stairwell 1	Wall	Deteriorated Paint
Playroom	Door Hinge	Deteriorated Paint

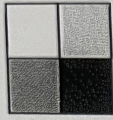
Identified hazards shall be remediated using either abatement (permanent) or interim controls (temporary). Abatement shall be performed by a NJ Licensed lead abatement firm using licensed lead abatement supervisors and workers. Interim control work shall be performed by EPA RRP certified firms using an EPA certified RRP Renovator. After completion of interim control work, a lead-based paint post-remediation with dust wipes will be required. After completion of abatement work, a lead-based paint abatement clearance will be required.

Respectfully Submitted,



Nyire Grant
 Risk Assessor, ID#D-I-T233827-23-00185
 Encl: Floor Plan, Photographs;

Floor Plan(s)

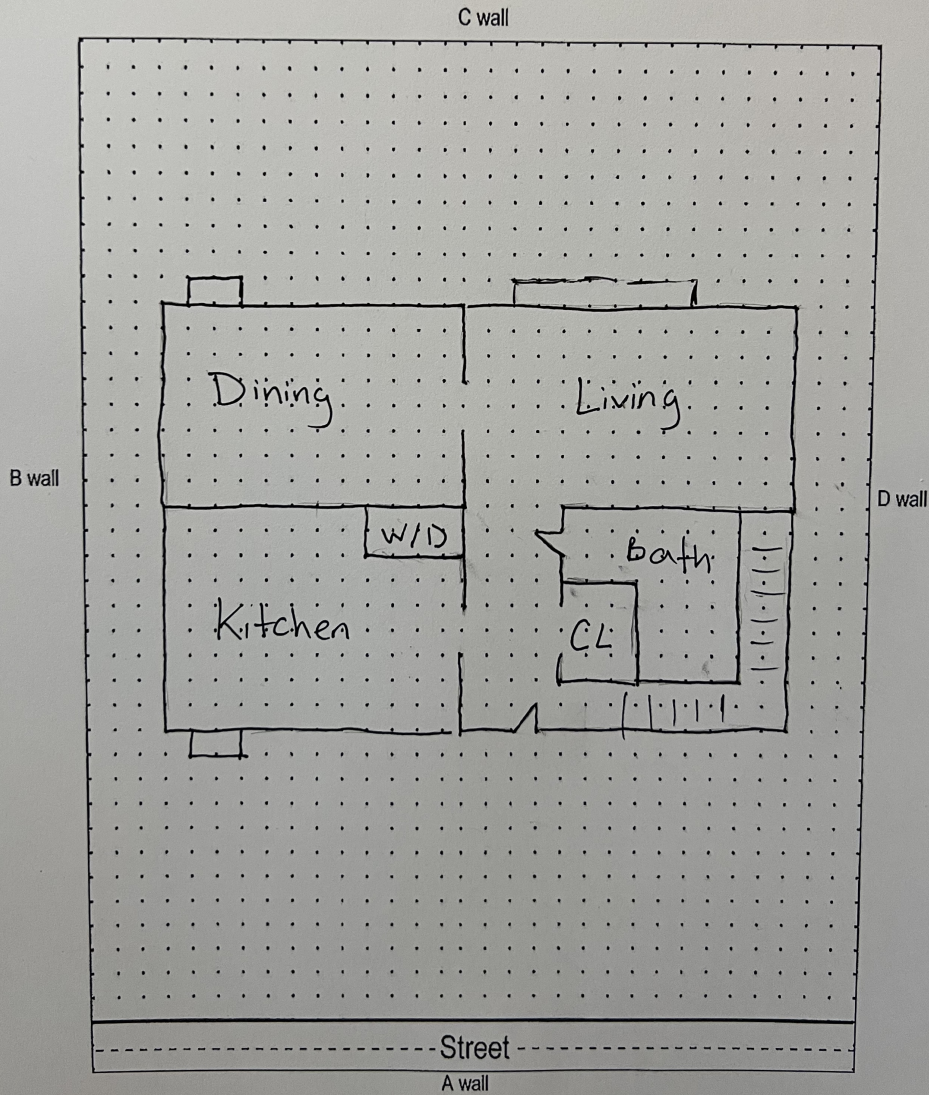


LEW
Corporation

"The Environmental Company"

Route 46
Mine Hill, NJ 07803
(908)654-8068
(800)783-0567
Fax (908)654-8069
www.lewcorp.com

Site: 579-4 Auten Rd, Hillsborough, NJ Floor 1



Floor 1

Lew Environmental Services - Auten Rd. -Visual Inspection
Prepared By: LEW Environmental Services, LLC
01/24/2024

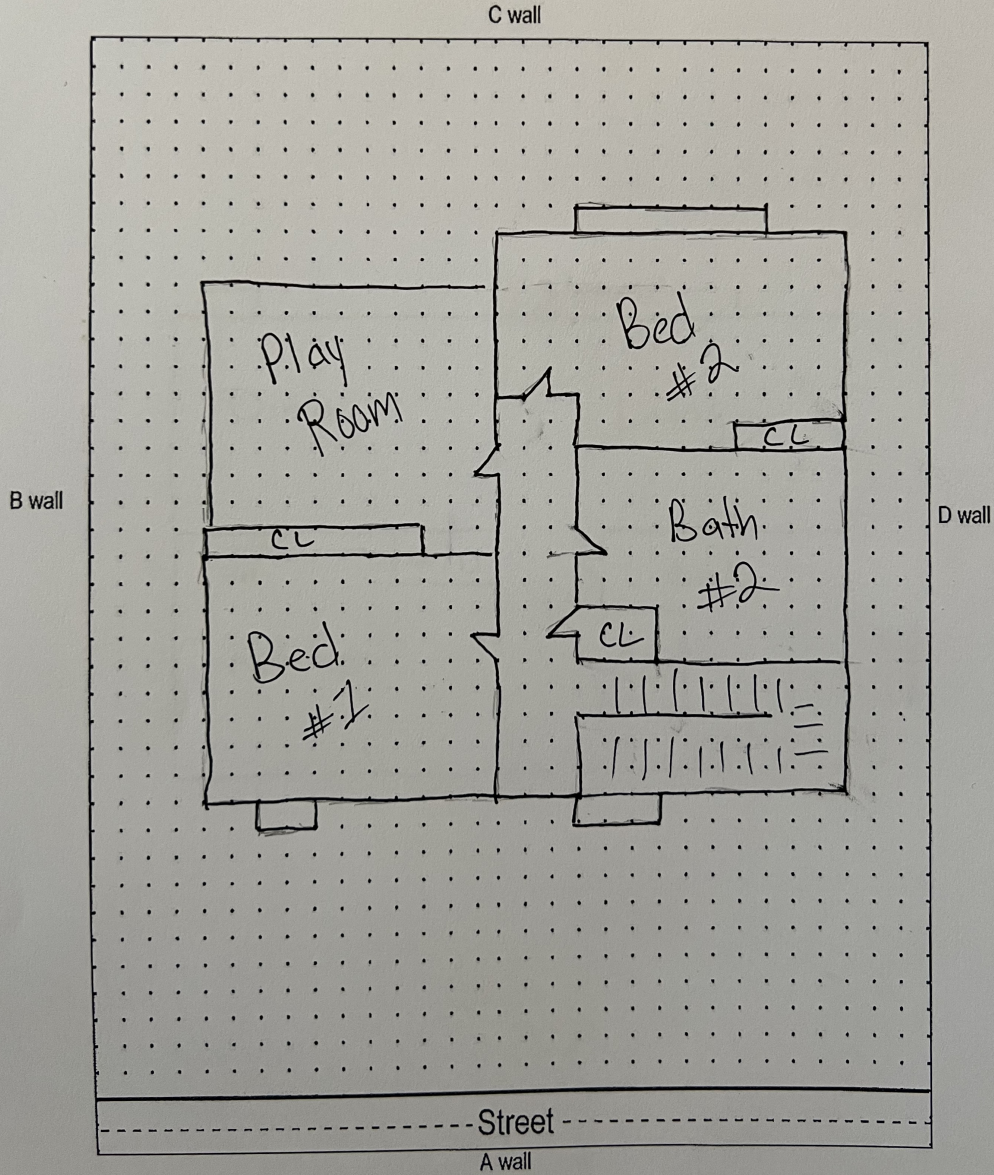


LEW
Corporation

"The Environmental Company"

Route 46
White Hill, NJ 07803
(908)654-8068
(800)783-0567
Fax (908)654-8069
www.lewcorp.com

Site: 579-4 Auten Rd, Hillsborough, NJ Floor 2



Floor 2

Lew Environmental Services - Auten Rd. -Visual Inspection
Prepared By: LEW Environmental Services, LLC
01/24/2024

Hazard Photos



Hazard: Bathroom 1 | Door | Deteriorated Paint



Hazard: Bathroom 1 | Door Casing | Deteriorated Paint



Hazard: Bathroom 2 | Door Casing | Deteriorated Paint



Hazard: Bathroom 2 | Door | Deteriorated Paint



Hazard: Stairwell 1 | Wall | Deteriorated Paint



Hazard: Stairwell 1 | Wall | Deteriorated Paint



Hazard: Playroom | Door Hinge | Deteriorated Paint

Lew Environmental Services - Auten Rd. -Visual Inspection

Prepared By: LEW Environmental Services, LLC

01/24/2024