

Visual Paint Assessment Report

For 900 G Merritt Drive, Hillsborough Township, NJ
 12/07/2023

On 12/07/23, LEW Environmental Services, LLC (NJDC A 00015 E) performed a visual paint condition assessment for the presence of deteriorated paint, chips or dust from painting activities and paint residue on floors at 900 G Merritt Drive,, (the "property") in compliance with NJAC 5:28A. Only the dwelling and common area interiors were included. Exteriors were not part of the assessment. The visual assessment followed the protocols found in HUD's Visual Assessment Training course.

Deteriorated paint, chips or dust from painting activities and paint residue on floors were observed on the following components/surfaces.

Room	Component	Hazard
Bathroom 2	Ceiling	Deteriorated Paint
Bathroom 2	Wall	Deteriorated Paint

Identified hazards shall be remediated using either abatement (permanent) or interim controls (temporary). Abatement shall be performed by a NJ Licensed lead abatement firm using licensed lead abatement supervisors and workers. Interim control work shall be performed by EPA RRP certified firms using an EPA certified RRP Renovator. After completion of interim control work, a lead-based paint post-remediation with dust wipes will be required. After completion of abatement work, a lead-based paint abatement clearance will be required.

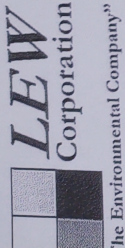
Respectfully Submitted,



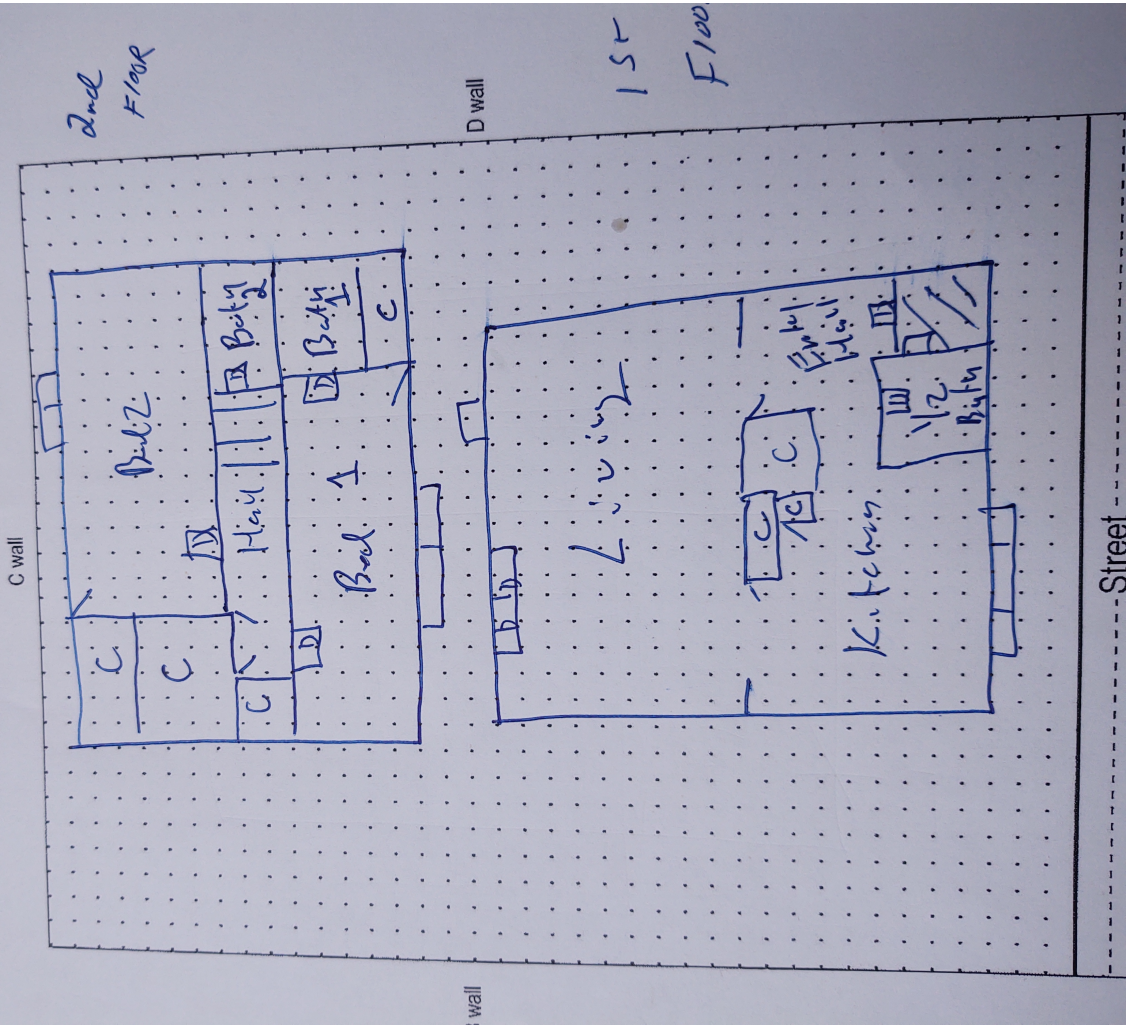
Mark Franz
 Risk Assessor, NJDOH ID#03265
 Encl: Floor Plan, Photographs;

Floor Plan

181 Route 46
 Mine Hill, NJ 07803
 (908)654-8068
 (800)783-0567
 Fax (908)654-8069
 www.lewcorp.com



Site: 900 Merritt Dr. G



Low Environmental Services - 900 G Merritt Drive, -Visual Inspection
 Prepared By: LEW Environmental Services, LLC
 12/07/2023

Hazard Photos



Hazard: Bathroom 2 | Ceiling | Deteriorated Paint Hazard: Bathroom 2 | Wall | Deteriorated Paint

Lew Environmental Services - 900 G Merritt Drive, -Visual Inspection

Prepared By: LEW Environmental Services, LLC

12/07/2023