

Visual Paint Assessment Report

For 7 Murray St. Freehold Borough, NJ 07728
04/19/2024

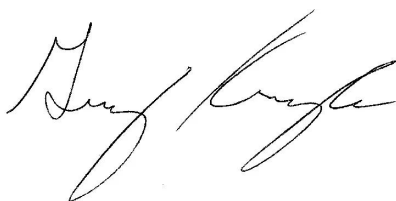
On 04/04/24, LEW Environmental Services, LLC (NJDC 00015 E) performed a visual paint condition assessment for the presence of deteriorated paint, chips or dust from painting activities and paint residue on floors at 7 Murray St., (the "property") in compliance with NJAC 5:28A. Only the dwelling and common area interiors were included. Exteriors were not part of the assessment. The visual assessment followed the protocols found in HUD's Visual Assessment Training course.

Deteriorated paint, chips or dust from painting activities and paint residue on floors were observed on the following components/surfaces.

Room	Component	Hazard
Bedroom 1	Door Casing	Deteriorated Paint
Bedroom 1	Door	Deteriorated Paint
bedroom 2 closet	Door Casing	Deteriorated Paint
Bedroom 1	Door	Deteriorated Paint
Bedroom 3 Closet Wall A	Door Casing	Deteriorated Paint
Bedroom 3 Closet wall A	Door	Deteriorated Paint

Identified hazards shall be remediated using either abatement (permanent) or interim controls (temporary). Abatement is permanent but has a higher cost, as Interim controls are temporary but can be much more affordable. Abatement shall be performed by a NJ Licensed lead abatement firm using licensed lead abatement supervisors and workers. You can find the list of NJ licensed lead abatement contractors at https://www.nj.gov/dca/divisions/codes/publications/pdf_lead/ld_abat_c.pdf. Interim control work shall be performed by EPA RRP certified firms using an EPA certified RRP Renovator. You can find certified EPA RRP contractors at <https://cdxappstest.epacdx.net/ocspp-oppt-leadhub/firm-location-search>. Select RRP Contractor, then NJ, then enter your zip code to search for contractors. After completion of interim control work, a lead-based paint post-remediation with dust wipes will be required. After completion of abatement work, a lead-based paint abatement clearance will be required..

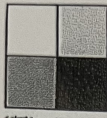
Respectfully Submitted,



Nyire Grant
EPA Dust Wipe Technician, ID#013865

Encl: Floor Plan, Photographs;

Floor Plan(s)

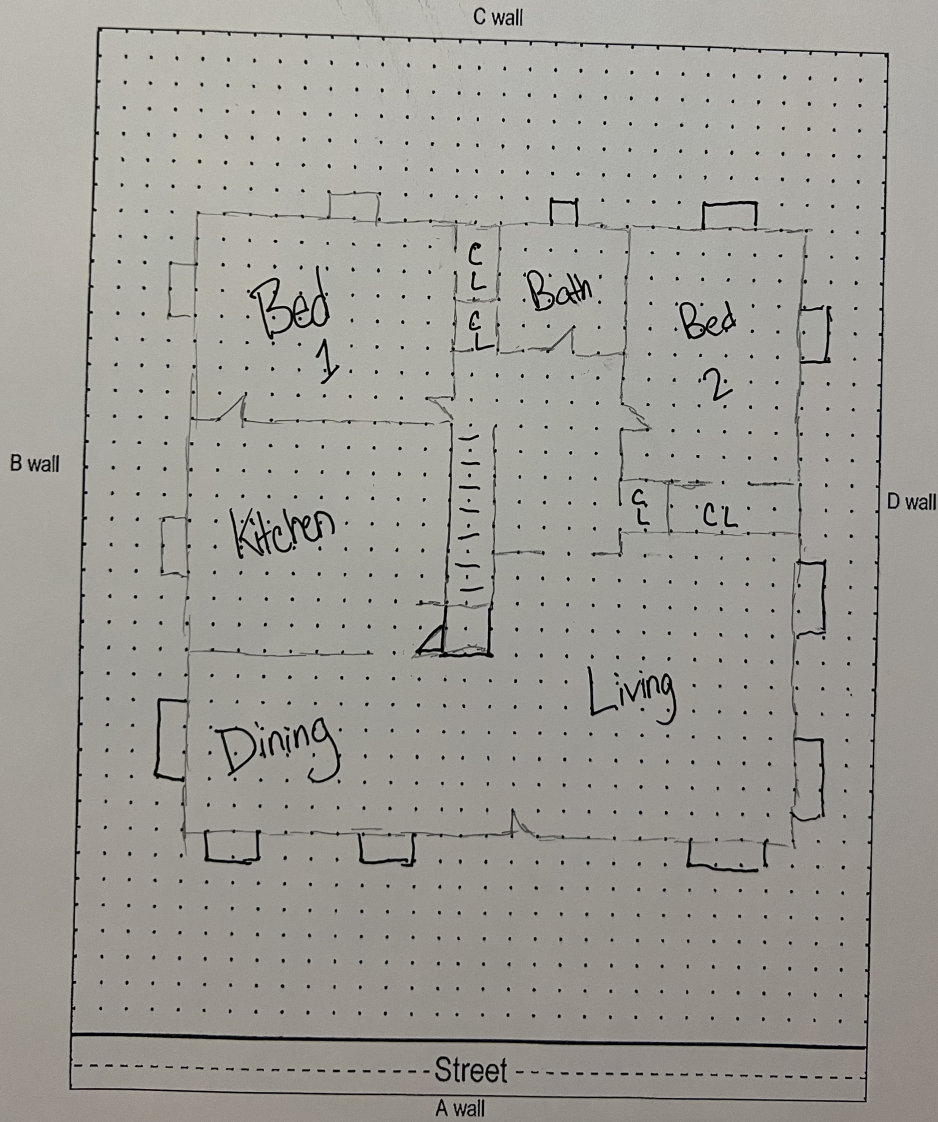


LEW
Corporation

"The Environmental Company"

181 Route 46
Mine Hill, NJ 07803
(908)654-8068
(800)783-0567
Fax (908)654-8069
www.lewcorp.com

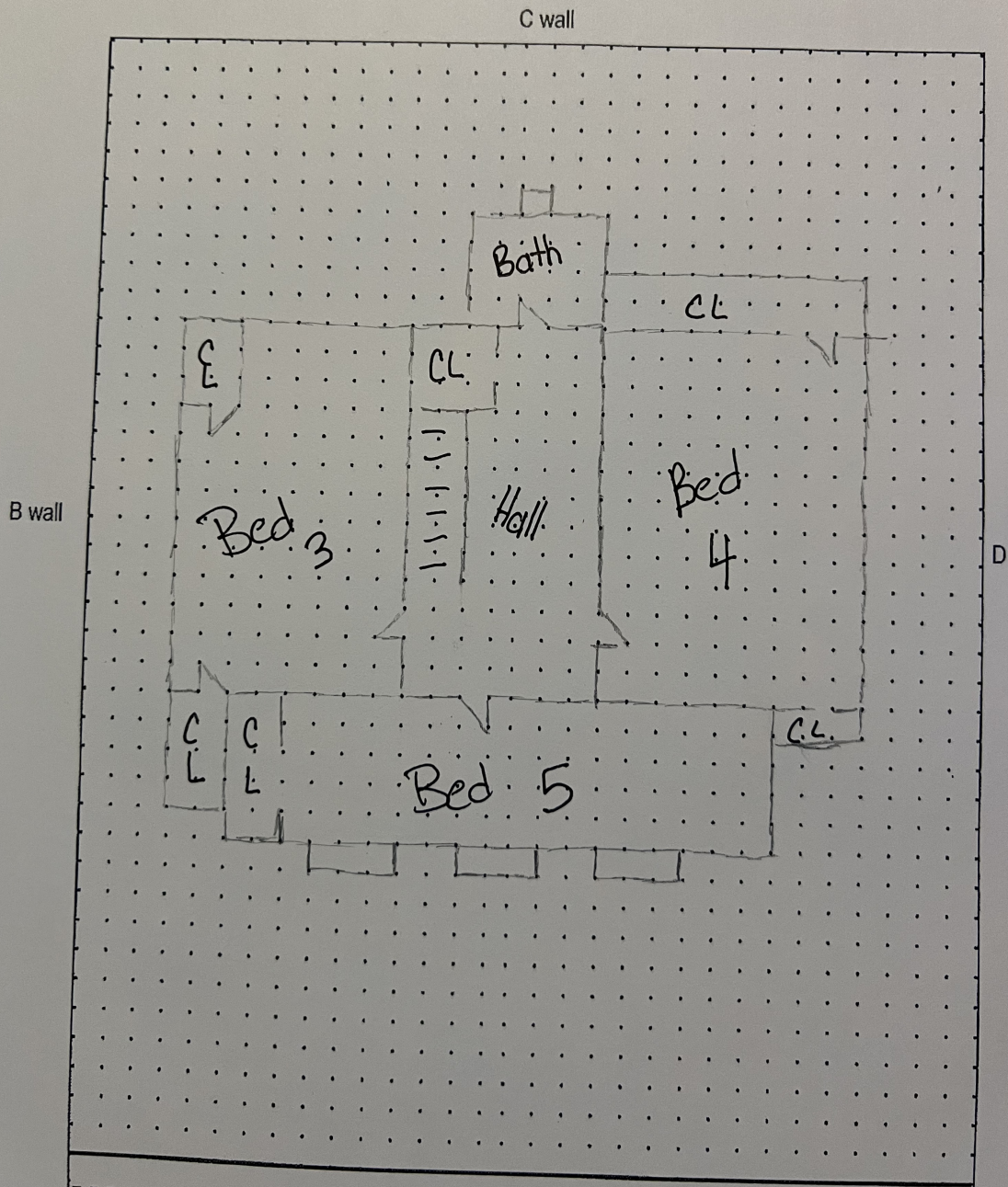
Site: 7 Murray St, Freehold Floor 1



Floor 1

Lew Environmental Services - 7 Murray St. -Visual Inspection
Prepared By: LEW Environmental Services, LLC
04/19/2024

Site: 7 Murray St, Freehold Floor 2



Floor 2

Lew Environmental Services - 7 Murray St. -Visual Inspection
Prepared By: LEW Environmental Services, LLC
04/19/2024

Hazard Photos



Hazard: Bedroom 1 | Door Casing | Deteriorated Paint



Hazard: Bedroom 1 | Door | Deteriorated Paint



Hazard: bedroom 2 closet | Door Casing | Deteriorated Paint



Hazard: Bedroom 1 | Door | Deteriorated Paint



Hazard: Bedroom 3 Closet Wall A | Door Casing | Deteriorated Paint



Hazard: Bedroom 3 Closet wall A | Door | Deteriorated Paint