

Visual Paint Assessment Report

For 775 Route 15 South Jefferson Township, NJ 07849
 06/09/2024

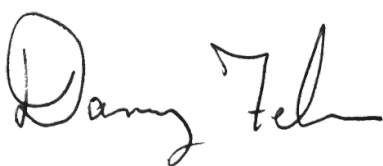
On 06/04/24, LEW Environmental Services, LLC (NJDC 00015 E) performed a visual paint condition assessment for the presence of deteriorated paint, chips or dust from painting activities and paint residue on floors at 775 Route 15 South, (the "property") in compliance with NJAC 5:28A. Only the dwelling and common area interiors were included. Exteriors were not part of the assessment. The visual assessment followed the protocols found in HUD's Visual Assessment Training course.

Deteriorated paint, chips or dust from painting activities and paint residue on floors were observed on the following components/surfaces.

Room	Component	Hazard
Bedroom 1	Wall	Deteriorated Paint
Bedroom 1	Window Casing/Stop	Deteriorated Paint
Bedroom 3	Wall	Deteriorated Paint
Foyer	Wall	Deteriorated Paint
Bathroom	Window Casing & Chair Rail Wall Trim	Deteriorated Paint
Bedroom 5	Wall underneath Window	Deteriorated Paint

Identified hazards shall be remediated using either abatement (permanent) or interim controls (temporary). Abatement is permanent but has a higher cost, as Interim controls are temporary but can be much more affordable. Abatement shall be performed by a NJ Licensed lead abatement firm using licensed lead abatement supervisors and workers. You can find the list of NJ licensed lead abatement contractors at https://www.nj.gov/dca/divisions/codes/publications/pdf_lead/ld_abat_c.pdf. Interim control work shall be performed by EPA RRP certified firms using an EPA certified RRP Renovator. You can find certified EPA RRP contractors at <https://cdxappstest.epacdx.net/ocspp-oppt-leadhub/firm-location-search>. Select RRP Contractor, then NJ, then enter your zip code to search for contractors. After completion of interim control work, a lead-based paint post-remediation with dust wipes will be required. After completion of abatement work, a lead-based paint abatement clearance will be required..

Respectfully Submitted,

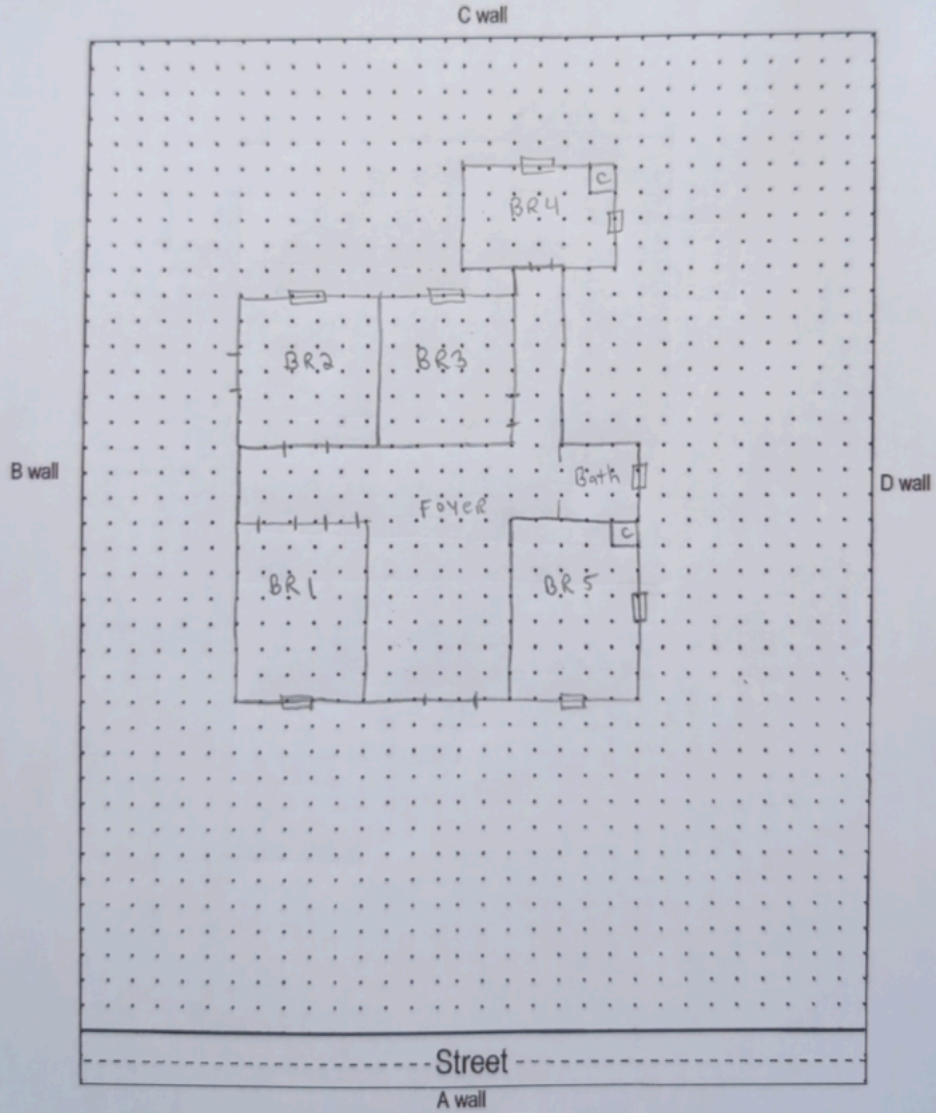


Danny Feliciano
 NJDOH Risk Assessor, ID#033001

Encl: Floor Plan, Photographs;

Floor Plan(s)

Site: 775 Rt. 15 South



Floor 1

Lew Environmental Services - 775 Route 15 South - Visual Inspection
Prepared By: LEW Environmental Services, LLC
06/09/2024

Hazard Photos



Hazard: Bedroom 1 | Wall | Deteriorated Paint



Hazard: Bedroom 1 | Window Casing/Stop | Deteriorated Paint



Hazard: Bedroom 3 | Wall | Deteriorated Paint



Hazard: Foyer | Wall | Deteriorated Paint



Hazard: Bathroom | Window Casing & Chair Rail
Wall Trim | Deteriorated Paint



Hazard: Bedroom 5 | Wall underneath Window | Deteriorated Paint

Low Environmental Services - 775 Route 15 South -Visual Inspection
Prepared By: LEW Environmental Services, LLC
06/09/2024