

## Visual Paint Assessment Report

For 73 Main Street Roxbury Township, NJ 07876  
07/03/2024

On 07/01/24, LEW Environmental Services, LLC (NJDC 00015 E) performed a visual paint condition assessment for the presence of deteriorated paint, chips or dust from painting activities and paint residue on floors at 73 Main Street, (the "property") in compliance with NJAC 5:28A. Only the dwelling and common area interiors were included. Exteriors were not part of the assessment. The visual assessment followed the protocols found in HUD's Visual Assessment Training course.

Deteriorated paint, chips or dust from painting activities and paint residue on floors were observed on the following components/surfaces.

Room	Component	Hazard
All Rooms	All Windows	Dust
All rooms	Baseboard	Dust
Kitchen	Ceiling	Deteriorated Paint
Basement Stairwell	Steps	Deteriorated Paint
Enclosed Porch, Bedrooms, Closets	Doors and Door Trims	Deteriorated Paint
Foyer	Baseboard	Deteriorated Paint

Identified hazards shall be remediated using either abatement (permanent) or interim controls (temporary). Abatement is permanent but has a higher cost, as Interim controls are temporary but can be much more affordable. Abatement shall be performed by a NJ Licensed lead abatement firm using licensed lead abatement supervisors and workers. You can find the list of NJ licensed lead abatement contractors at [https://www.nj.gov/dca/divisions/codes/publications/pdf\\_lead/ld\\_abat\\_c.pdf](https://www.nj.gov/dca/divisions/codes/publications/pdf_lead/ld_abat_c.pdf). Interim control work shall be performed by EPA RRP certified firms using an EPA certified RRP Renovator. You can find certified EPA RRP contractors at <https://cdxappstest.epacdx.net/ocspp-oppt-leadhub/firm-location-search>. Select RRP Contractor, then NJ, then enter your zip code to search for contractors. After completion of interim control work, a lead-based paint post-remediation with dust wipes will be required. After completion of abatement work, a lead-based paint abatement clearance will be required..

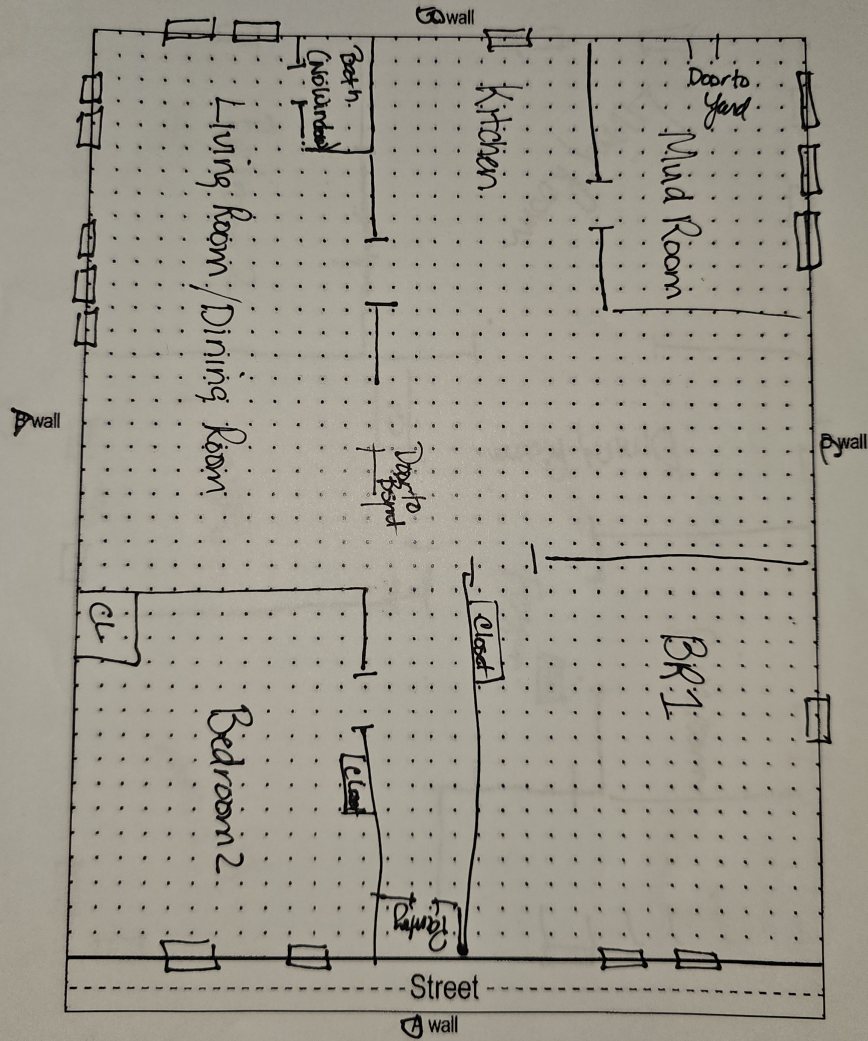
Respectfully Submitted,



Gloria Washington  
NJDOH Risk Assessor, ID#040601  
Encl: Floor Plan, Photographs;

# Floor Plan(s)

Site: 73 Main Street, Roxbury NJ



Floor 1

Low Environmental Services - 73 Main Street - Visual Inspection  
Prepared By: LEW Environmental Services, LLC  
07/03/2024

# Hazard Photos



Hazard: All Rooms | All Windows | Dust



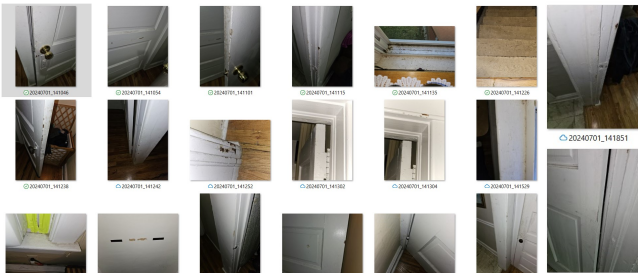
Hazard: All rooms | Baseboard | Dust



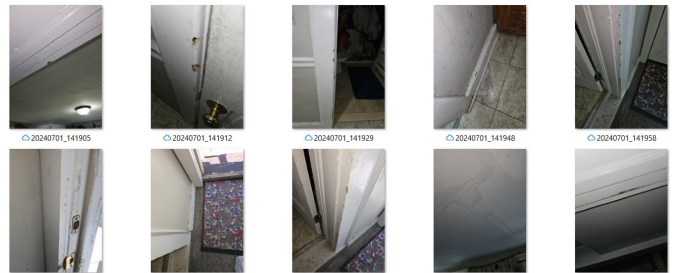
Hazard: Kitchen | Ceiling | Deteriorated Paint



Hazard: Basement Stairwell | Steps | Deteriorated Paint



Hazard: Enclosed Porch, Bedrooms, Closets | Doors and Door Trims | Deteriorated Paint



Hazard: Foyer | Baseboard | Deteriorated Paint

Low Environmental Services - 73 Main Street -Visual Inspection  
 Prepared By: LEW Environmental Services, LLC  
 07/03/2024