

Visual Paint Assessment Report

For 716 Nassau Street North Brunswick Township, NJ 08902
 12/22/2023

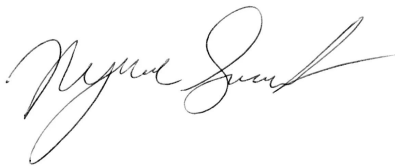
On 12/22/23, LEW Environmental Services, LLC (NJDCA 00015 E) performed a visual paint condition assessment for the presence of deteriorated paint, chips or dust from painting activities and paint residue on floors at 716 Nassau Street, (the "property") in compliance with NJAC 5:28A. Only the dwelling and common area interiors were included. Exteriors were not part of the assessment. The visual assessment followed the protocols found in HUD's Visual Assessment Training course.

Deteriorated paint, chips or dust from painting activities and paint residue on floors were observed on the following components/surfaces.

Room	Component	Hazard
Kitchen	Closet Door Frame	Deteriorated Paint

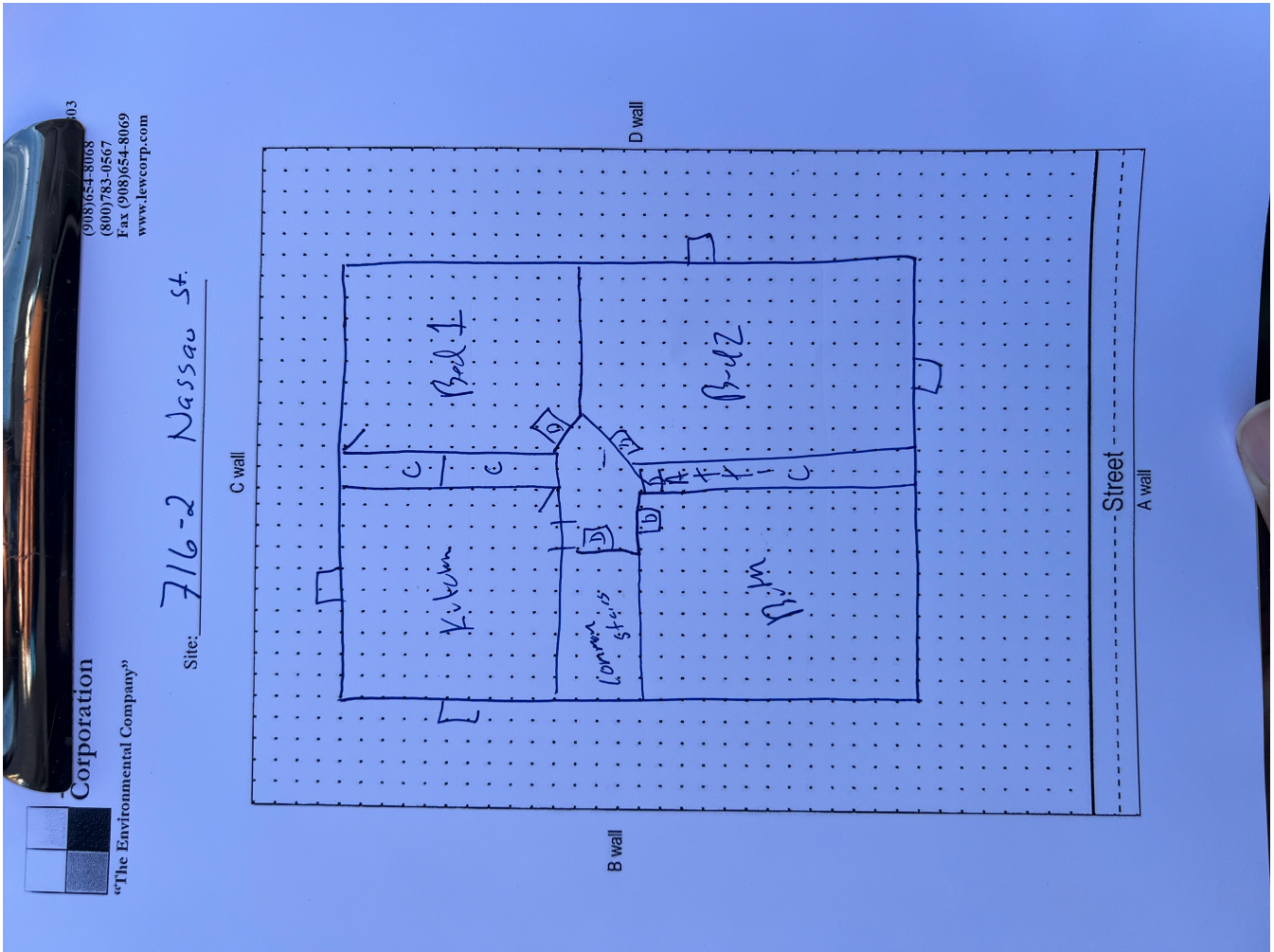
Identified hazards shall be remediated using either abatement (permanent) or interim controls (temporary). Abatement shall be performed by a NJ Licensed lead abatement firm using licensed lead abatement supervisors and workers. Interim control work shall be performed by EPA RRP certified firms using an EPA certified RRP Renovator. After completion of interim control work, a lead-based paint post-remediation with dust wipes will be required. After completion of abatement work, a lead-based paint abatement clearance will be required.

Respectfully Submitted,



Nyire Grant
 Risk Assessor, ID#D-I-T233827-23-00185
 Encl: Floor Plan, Photographs;

Floor Plan(s)



Floor 1

Lew Environmental Services - 716 Nassau Street -Visual Inspection
Prepared By: LEW Environmental Services, LLC
12/22/2023

Hazard Photos



Hazard: Kitchen | Closet Door Frame | Deteriorated Paint

Lew Environmental Services - 716 Nassau Street -Visual Inspection

Prepared By: LEW Environmental Services, LLC

12/22/2023