



181 US Hwy 46
Mine Hill, NJ 07830
(908) 654-8068
(800) 783-0567
Fax 908-654-8069

Visual Paint Assessment Report

For 55 Iroquois Avenue Unit:Primary Roxbury Township, NJ 07876
09/05/2024

On 09/05/24, LEW Environmental Services, LLC (NJDC 00015 E) performed a visual paint condition assessment for the presence of deteriorated paint, chips or dust from painting activities and paint residue on floors at 55 Iroquois Avenue Unit:Primary, (the "property") in compliance with NJAC 5:28A. Only the dwelling and common area interiors were included. Exteriors were not part of the assessment. The visual assessment followed the protocols found in HUD's Visual Assessment Training course.

Deteriorated paint, chips or dust from painting activities and paint residue on floors were observed on the following components/surfaces.

Room	Component	Hazard
Living Room	Wall A and Ceiling	Cracking / Peeling
Living Room	Closet Door Frame	Deteriorated Paint

Identified hazards shall be remediated using either abatement (permanent) or interim controls (temporary). Abatement is permanent but has a higher cost, as Interim controls are temporary but can be much more affordable. Abatement shall be performed by a NJ Licensed lead abatement firm using licensed lead abatement supervisors and workers. You can find the list of NJ licensed lead abatement contractors at https://www.nj.gov/dca/divisions/codes/publications/pdf_lead/ld_abat_c.pdf. Interim control work shall be performed by EPA RRP certified firms using an EPA certified RRP Renovator. You can find certified EPA RRP contractors at <https://cdxapps.epa.gov/ocspp-oppt-lead/firm-location-search>. Select RRP Contractor, then NJ, then enter your zip code to search for contractors. After completion of interim control work, a lead-based paint post-remediation with dust wipes will be required. After completion of abatement work, a lead-based paint abatement clearance will be required..

Respectfully Submitted,

A handwritten signature in black ink that reads 'Yerani Heredia'.

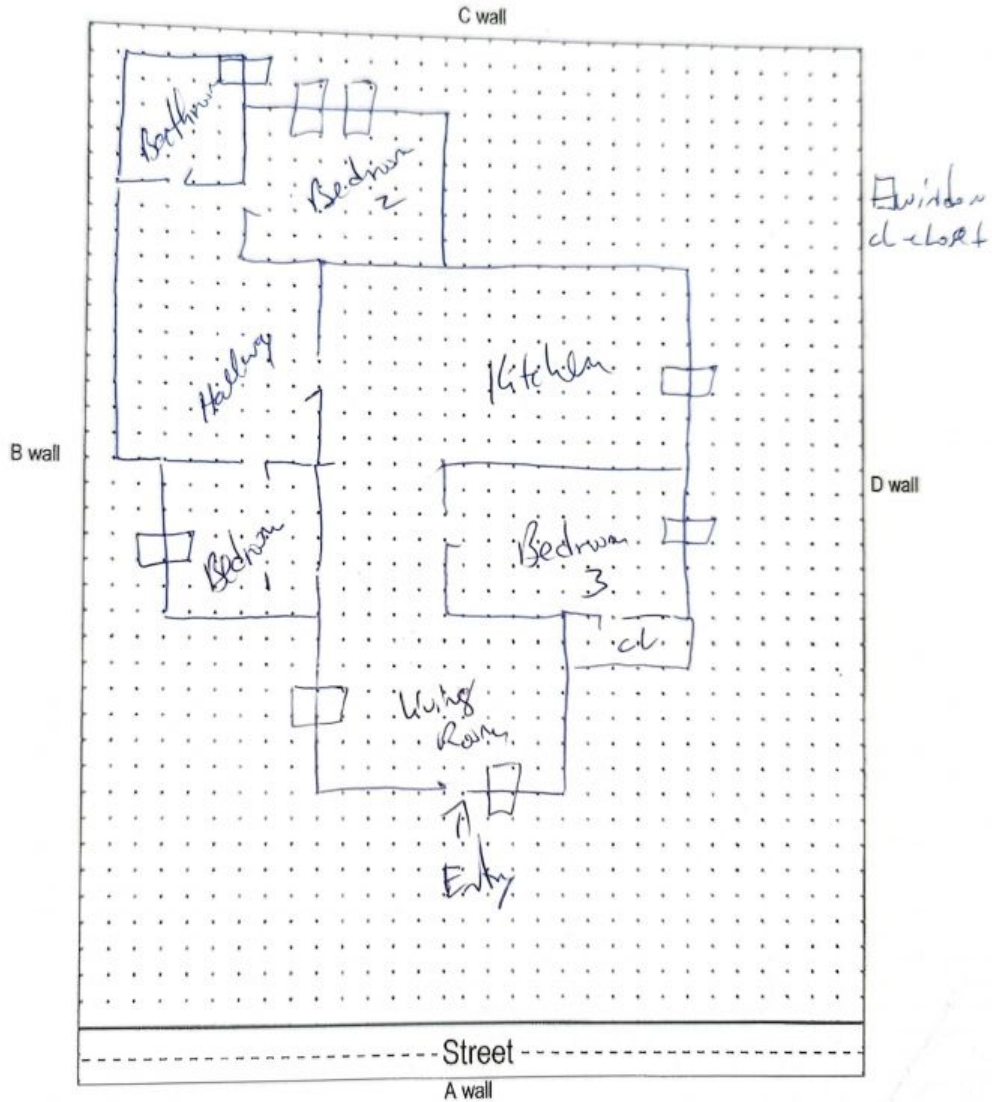
Yerani Heredia De Rosado
NJDOH Risk Assessor, ID#R001913
Encl: Floor Plan, Photographs;

Floor Plan(s)



181 US Hwy 46
Mine Hill, NJ 07803
(908) 654-8068
(800) 783-1567
Fax (908) 654-8069
www.lewenvironmental.com

Site: 55 Iroquois Ave. Landing, NJ 07850



Floor 1

Lew Environmental Services - 55 Iroquois Avenue Unit: Primary - Visual Inspection
Prepared By: LEW Environmental Services, LLC
09/05/2024

Hazard Photos



Hazard: Living Room | Wall A and Ceiling |
Cracking / Peeling



Hazard: Living Room | Closet Door Frame |
Deteriorated Paint

Lew Environmental Services - 55 Iroquois Avenue Unit:Primary -Visual Inspection
Prepared By: LEW Environmental Services, LLC
09/05/2024