

Visual Paint Assessment Report

For 439 Boonton Ave Boonton Town, NJ 07005
 12/19/2023

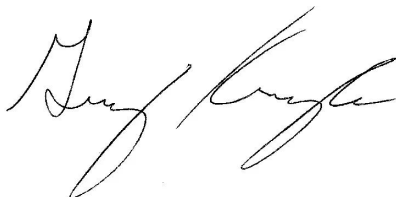
On 12/19/23, LEW Environmental Services, LLC (NJDC A 00015 E) performed a visual paint condition assessment for the presence of deteriorated paint, chips or dust from painting activities and paint residue on floors at 439 Boonton Ave, (the "property") in compliance with NJAC 5:28A. Only the dwelling and common area interiors were included. Exteriors were not part of the assessment. The visual assessment followed the protocols found in HUD's Visual Assessment Training course.

Deteriorated paint, chips or dust from painting activities and paint residue on floors were observed on the following components/surfaces.

Room	Component	Hazard
Dining Room	Baseboard	Deteriorated Paint
Dining Room	Door Casing	Deteriorated Paint
Dining Room	Door Casing	Deteriorated Paint
Sun Room	Baseboard	Deteriorated Paint
Sun Room	Window Sill	Deteriorated Paint
Bedroom 3	Door Casing	Deteriorated Paint
Hallway 1	Door Casing	Deteriorated Paint

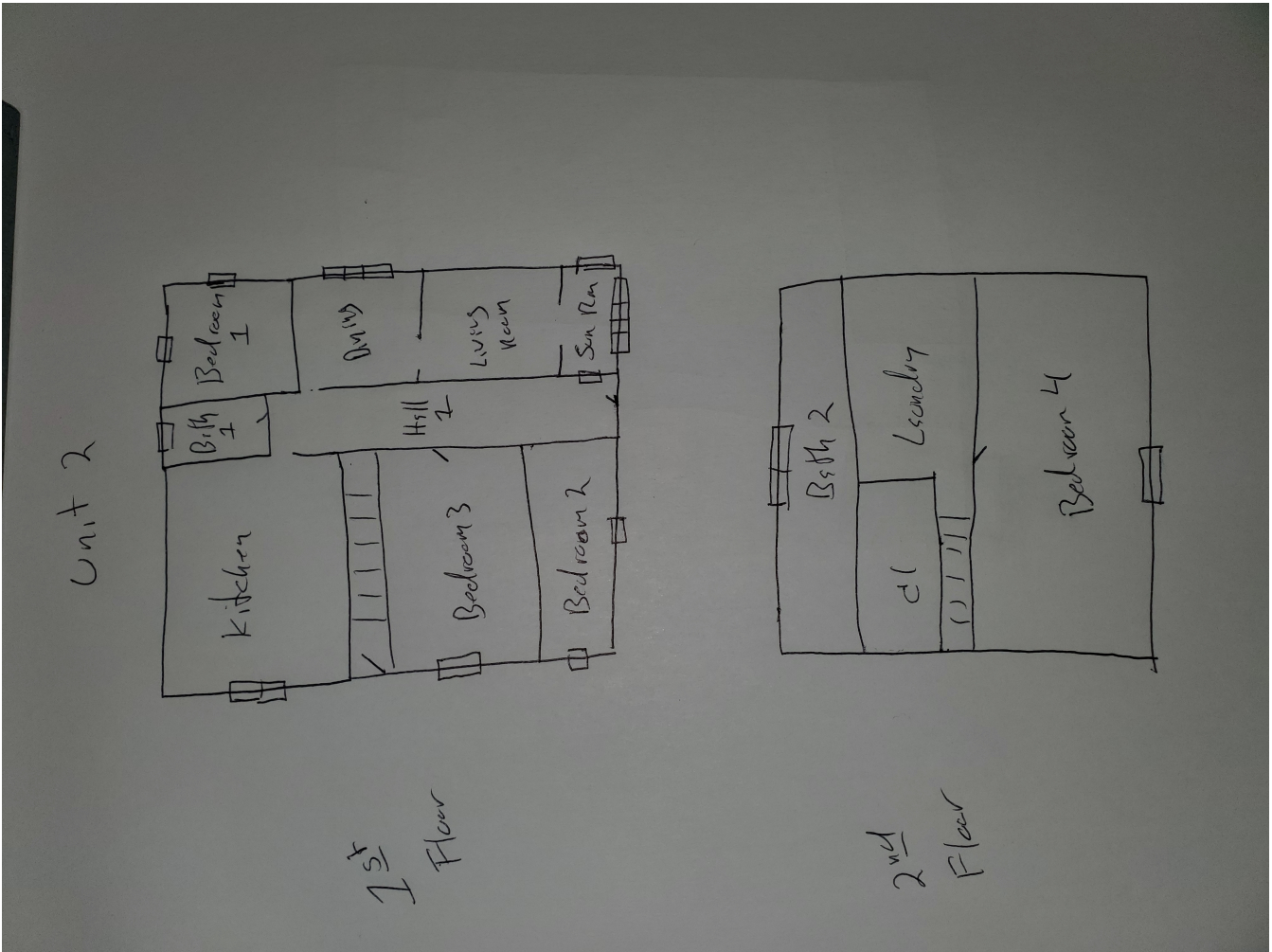
Identified hazards shall be remediated using either abatement (permanent) or interim controls (temporary). Abatement shall be performed by a NJ Licensed lead abatement firm using licensed lead abatement supervisors and workers. Interim control work shall be performed by EPA RRP certified firms using an EPA certified RRP Renovator. After completion of interim control work, a lead-based paint post-remediation with dust wipes will be required. After completion of abatement work, a lead-based paint abatement clearance will be required.

Respectfully Submitted,



Greg Krueger
 Risk Assessor, NJDOH ID#013865
 Encl: Floor Plan, Photographs;

Floor Plan(s)



Floor 1

Low Environmental Services - 439 Boonton Ave -Visual Inspection
Prepared By: LEW Environmental Services, LLC
12/19/2023

Hazard Photos



Hazard: Dining Room | Baseboard | Deteriorated Paint



Hazard: Dining Room | Door Casing | Deteriorated Paint



Hazard: Dining Room | Door Casing | Deteriorated Paint



Hazard: Sun Room | Baseboard | Deteriorated Paint



Hazard: Sun Room | Window Sill | Deteriorated Paint



Hazard: Bedroom 3 | Door Casing | Deteriorated Paint



Hazard: Hallway 1 | Door Casing | Deteriorated
Paint

Lew Environmental Services - 439 Boonton Ave -Visual Inspection
Prepared By: LEW Environmental Services, LLC
12/19/2023