

## Visual Paint Assessment Report

For 42 SUNRISE TERRACE Unit:Primary Cedar Grove Township, NJ 07009  
10/31/2024

On 10/30/2024, LEW Environmental Services, LLC (NJDCA 00015 E) performed a visual paint condition assessment for the presence of deteriorated paint, chips or dust from painting activities and paint residue on floors at 42 SUNRISE TERRACE Unit:Primary, (the "property") in compliance with NJAC 5:28A. Only the dwelling and common area interiors were included. Exteriors were not part of the assessment. The visual assessment followed the protocols found in HUD's Visual Assessment Training course.

Deteriorated paint, chips or dust from painting activities and paint residue on floors were observed on the following components/surfaces.

Room	Component	Hazard
All Rooms	Window Sill	Dust
Living Room	Steps	Dust

Identified hazards shall be remediated using either abatement (permanent) or interim controls (temporary). Abatement is permanent but has a higher cost, as Interim controls are temporary but can be much more affordable. Abatement shall be performed by a NJ Licensed lead abatement firm using licensed lead abatement supervisors and workers. You can find the list of NJ licensed lead abatement contractors at [https://www.nj.gov/dca/divisions/codes/publications/pdf\\_lead/ld\\_abat\\_c.pdf](https://www.nj.gov/dca/divisions/codes/publications/pdf_lead/ld_abat_c.pdf). Interim control work shall be performed by EPA RRP certified firms using an EPA certified RRP Renovator. You can find certified EPA RRP contractors at <https://cdxapps.epa.gov/ocspp-oppt-lead/firm-location-search>. Select RRP Contractor, then NJ, then enter your zip code to search for contractors. After completion of interim control work, a lead-based paint post-remediation with dust wipes will be required. After completion of abatement work, a lead-based paint abatement clearance will be required.

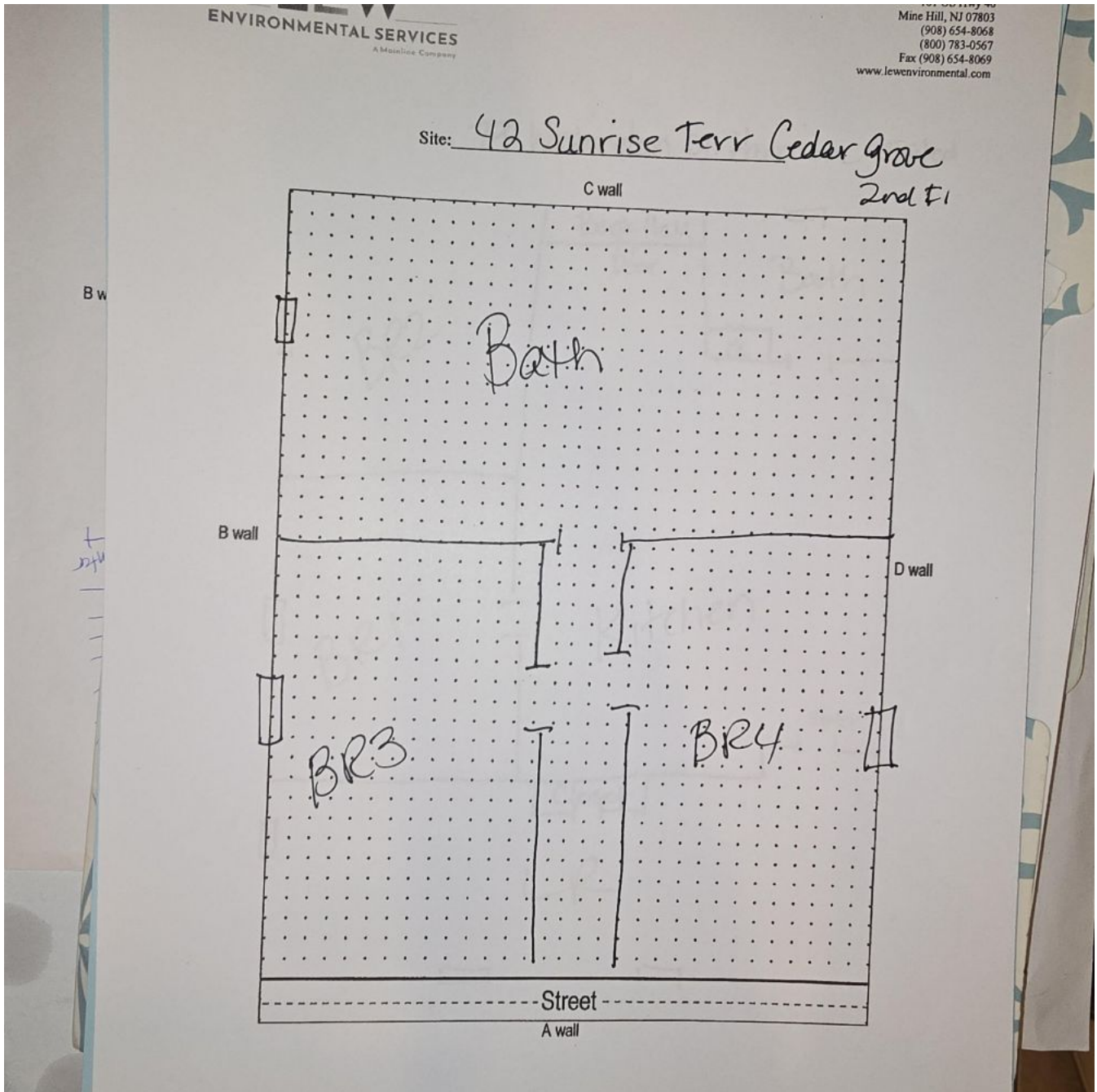
No furniture, artwork or other large objects were moved during this visual inspection. If those objects are moved during after this inspection occurred and deteriorated paint is observed, it should also be included in the repair scope of work. If those areas are present during the reinspection, it would result in a failure.

Respectfully Submitted,



Gloria Washington  
NJDOH Risk Assessor, ID#040601  
Encl: Floor Plan, Photographs;

# Floor Plan(s)



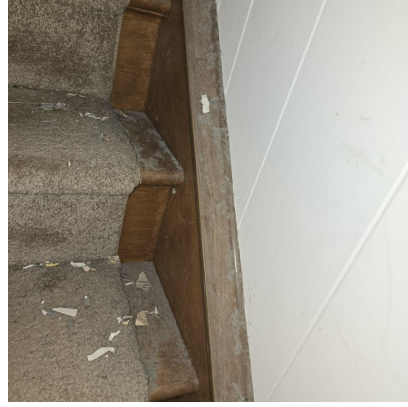
Floor 1

Leu Environmental Services - 42 SUNRISE TERRACE Unit:Primary -Visual Inspection  
Prepared By: LEW Environmental Services, LLC  
10/31/2024

## Hazard Photos



Hazard: All Rooms | Window Sill | Dust



Hazard: Living Room | Steps | Dust

Low Environmental Services - 42 SUNRISE TERRACE Unit:Primary -Visual Inspection  
Prepared By: LEW Environmental Services, LLC  
10/31/2024