



181 US Hwy 46
Mine Hill, NJ 07830
(908) 654-8068
(800) 783-0567
Fax 908-654-8069

Visual Paint Assessment Report

For 40 Weaver St Unit:40 Summit City, NJ 07901
07/02/2024

On 07/02/24, LEW Environmental Services, LLC (NJDC 00015 E) performed a visual paint condition assessment for the presence of deteriorated paint, chips or dust from painting activities and paint residue on floors at 40 Weaver St Unit:40, (the "property") in compliance with NJAC 5:28A. Only the dwelling and common area interiors were included. Exteriors were not part of the assessment. The visual assessment followed the protocols found in HUD's Visual Assessment Training course.

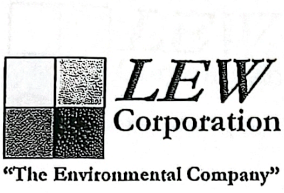
No deteriorated paint, chips or dust from painting activities or paint residue on floors were observed in the dwelling unit. The property is eligible for a lead-safe certificate per NJAC 5:28A. Certificate enclosed

Respectfully Submitted,

A handwritten signature in black ink that reads 'Yerani Heredia'.

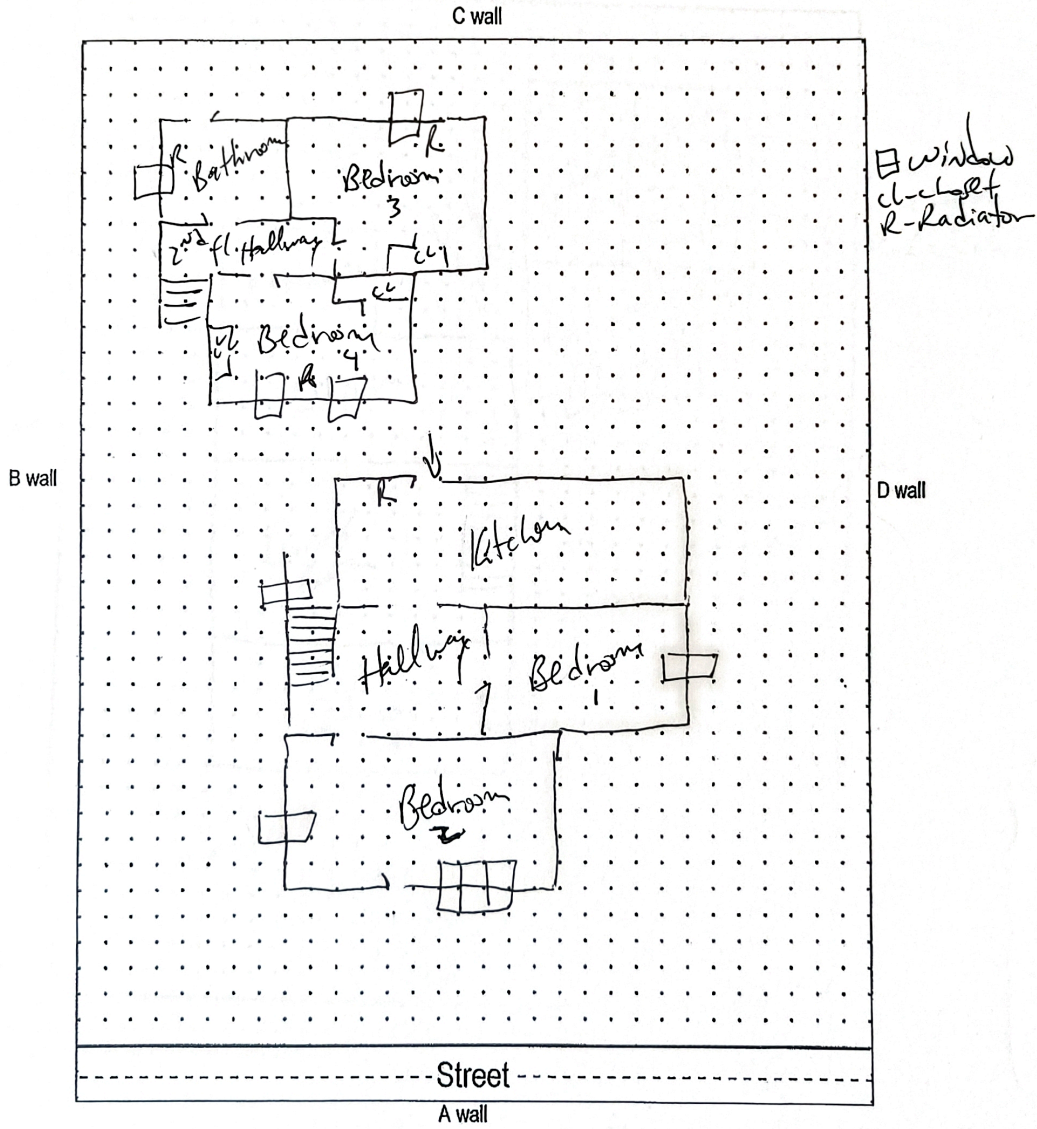
Yerani Heredia De Rosado
NJDOH Risk Assessor, ID#R001913
Encl: Floor Plan, Lead-safe Certificate;

Floor Plan(s)



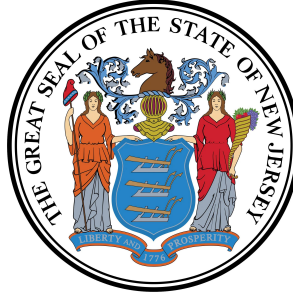
181 Route 46
Mine Hill, NJ 07803
(908)654-8068
(800)783-0567
Fax (908)654-8069
www.lewcorp.com

Site: 40 Weaver St., Summit City, NJ



Floor 1

Lew Environmental Services - 40 Weaver St Unit:40 -Visual Inspection
Prepared By: LEW Environmental Services, LLC
07/02/2024



Lead Safe Certificate

It is hereby certified that a lead based paint visual inspection and/or dust wipe sampling has been performed in accordance with the protocols referenced in N.J.A.C. 5:17, and the results of which indicate that no lead-based paint hazards have been found in the dwelling unit listed below. It shall be the owner's responsibility to perform any required on-going evaluation and maintenance to ensure that the dwelling unit remain in a Lead - Safe condition. PURSUANT TO P.L.2003, c.311 (C.52:27D-437.1 et. seq.)

This certificate is **Valid For Two Years**

40 Weaver St Unit:40 Summit City, NJ 07901

1302

36

Site Address

Block

Lot

Applicable Dwelling Unit: **40 Weaver St Unit:40**

(CERTIFICATE IS VALID FOR A DWELLING UNIT AND SHALL BE AFFIXED TO LEASE)

Insp/RA Name: Yerani Heredia De Rosado

Evaluation Contractor #: 00015-E

Phone: 908-654-8068

Contractor Name:

Lew Environmental Services, LLC

Contractor Address:

181 US Hwy 46

Mine Hill, NJ 07830

Yerani Heredia

R001913

Signature

ID#

Date Issued:

07/02/24

(mm/dd/yyyy)