

Visual Paint Assessment Report

For 158 Wilson st Boonton Town, NJ 07005 (Unit A)
 06/10/2024

On 06/10/24, LEW Environmental Services, LLC (NJDC 00015 E) performed a visual paint condition assessment for the presence of deteriorated paint, chips or dust from painting activities and paint residue on floors at 158 Wilson st, (the "property") in compliance with NJAC 5:28A. Only the dwelling and common area interiors were included. Exteriors were not part of the assessment. The visual assessment followed the protocols found in HUD's Visual Assessment Training course.

Deteriorated paint, chips or dust from painting activities and paint residue on floors were observed on the following components/surfaces.

Room	Component	Hazard
Bedroom 1	Window Sash and Jamb	Deteriorated Paint
Bedroom 1	Pipe	Deteriorated Paint
Living Room	Closet Door Jamb	Deteriorated Paint
Living Room	Door and Pipe	Deteriorated Paint
Living Room	Window Sill	Deteriorated Paint
Hall	Closet Wall	Deteriorated Paint
Bedroom 2	Wall C	Deteriorated Paint
Kitchen	Window Sill and Sash ; Door Casing	Deteriorated Paint
Bathroom	Wall and Ceiling	Deteriorated Paint
Bathroom	Window Sash	Deteriorated Paint

Identified hazards shall be remediated using either abatement (permanent) or interim controls (temporary). Abatement is permanent but has a higher cost, as Interim controls are temporary but can be much more affordable. Abatement shall be performed by a NJ Licensed lead abatement firm using licensed lead abatement supervisors and workers. You can find the list of NJ licensed lead abatement contractors at https://www.nj.gov/dca/divisions/codes/publications/pdf_lead/ld_abat_c.pdf. Interim control work shall be performed by EPA RRP certified firms using an EPA certified RRP Renovator. You can find certified EPA RRP contractors at <https://cdxappstest.epacdx.net/ocspp-oppt-leadhub/firm-location-search>. Select RRP Contractor, then NJ, then enter your zip code to search for contractors. After completion of interim control work, a lead-based paint post-remediation with dust wipes will be required. After completion of abatement work, a lead-based paint abatement clearance will be required..

Respectfully Submitted,

Gerani Heredia

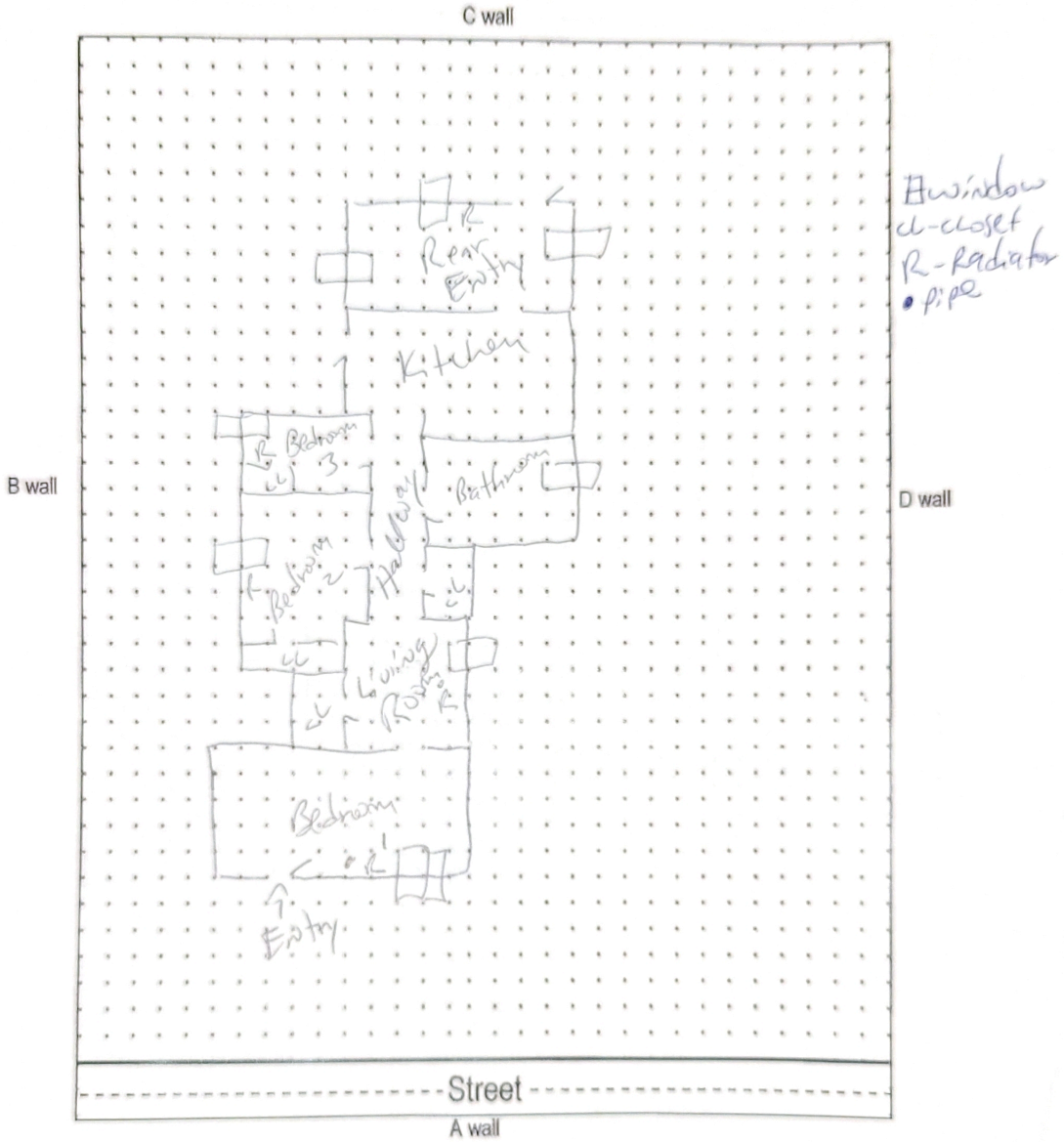
Yerani Heredia De Rosado
NJDOH Risk Assessor, ID#R001913
Encl: Floor Plan, Photographs;

Floor Plan(s)



181 US Hwy 46
Mine Hill, NJ 07803
(908) 654-8068
(800) 783-0567
Fax (908) 654-8069
www.lewenvironmental.com

Site: 158 Wilson st. unit A, Bound Brook, NJ



Floor 1

Lew Environmental Services - 158 Wilson st - Visual Inspection
Prepared By: LEW Environmental Services, LLC
06/10/2024

Hazard Photos



Hazard: Bedroom 1 | Window Sash and Jamb | Deteriorated Paint



Hazard: Bedroom 1 | Pipe | Deteriorated Paint



Hazard: Living Room | Closet Door Jamb | Deteriorated Paint



Hazard: Living Room | Door | Deteriorated Paint



Hazard: Living Room | Window Sill | Deteriorated Paint



Hazard: Hall | Closet Wall | Deteriorated Paint



Hazard: Bedroom 2 | Wall C | Deteriorated Paint



Hazard: Kitchen | Window Sill and Sash | Deteriorated Paint



Hazard: Bathroom | Wall and Ceiling | Deteriorated Paint



Hazard: Bathroom | Window Sash | Deteriorated Paint

Lew Environmental Services - 158 Wilson st -Visual Inspection
Prepared By: LEW Environmental Services, LLC
06/10/2024

Kitchen Door Casing

