

## Visual Paint Assessment Report

For 3001 cromwell ct Hillsborough Township, NJ 08844  
 01/24/2024

On 01/23/24, LEW Environmental Services, LLC (NJDC A 00015 E) performed a visual paint condition assessment for the presence of deteriorated paint, chips or dust from painting activities and paint residue on floors at 3001 cromwell ct, (the "property") in compliance with NJAC 5:28A. Only the dwelling and common area interiors were included. Exteriors were not part of the assessment. The visual assessment followed the protocols found in HUD's Visual Assessment Training course.

Deteriorated paint, chips or dust from painting activities and paint residue on floors were observed on the following components/surfaces.

Room	Component	Hazard
Bedroom 1	Door Casing	Deteriorated Paint
Bedroom 1	Door Casing	Deteriorated Paint
Bedroom 2	Door Casing	Deteriorated Paint
Kitchen	Baseboard	Deteriorated Paint
Stairwell 1	Wall	Deteriorated Paint
Storage Room	Pipe	Deteriorated Paint

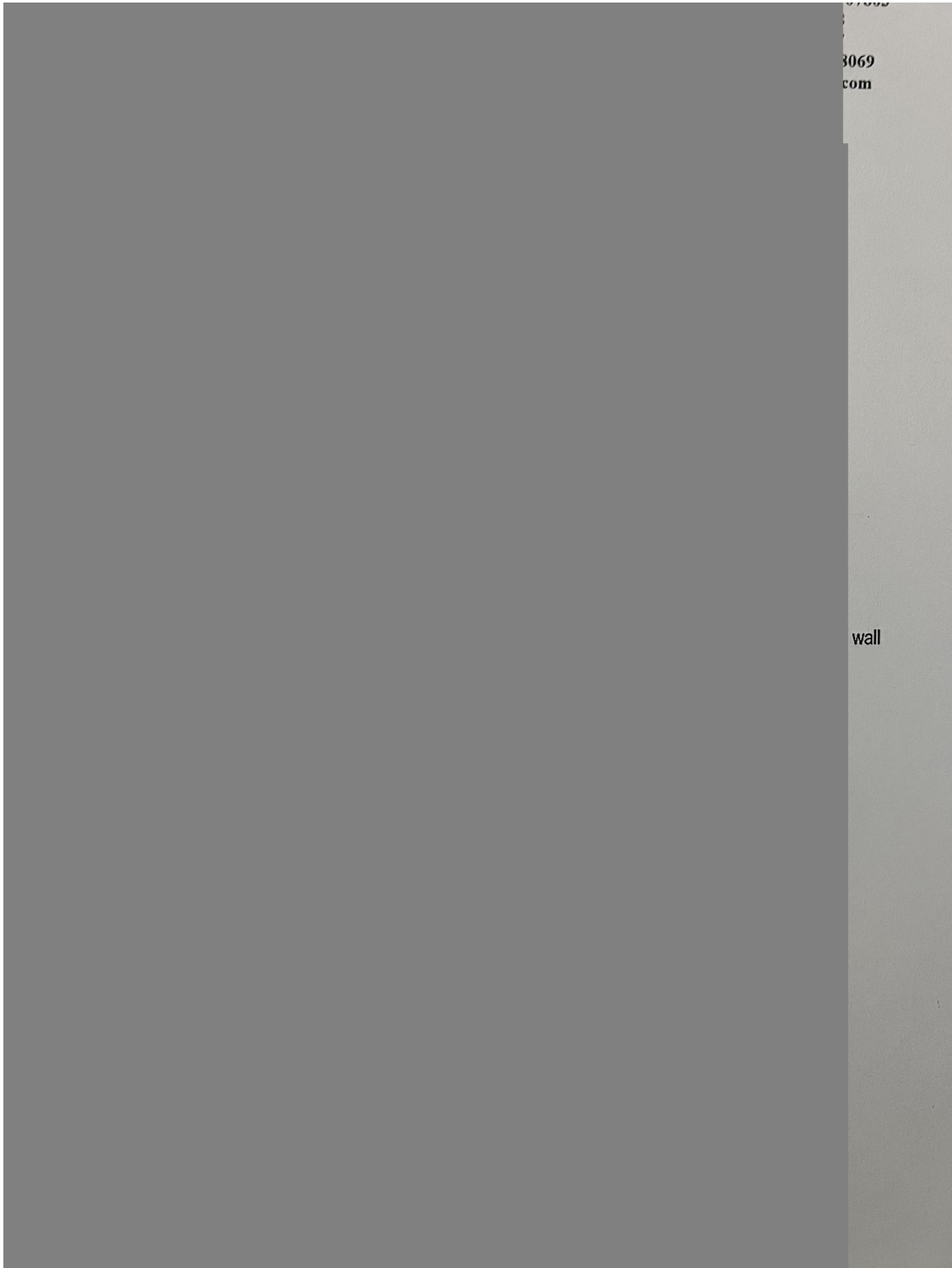
Identified hazards shall be remediated using either abatement (permanent) or interim controls (temporary). Abatement shall be performed by a NJ Licensed lead abatement firm using licensed lead abatement supervisors and workers. Interim control work shall be performed by EPA RRP certified firms using an EPA certified RRP Renovator. After completion of interim control work, a lead-based paint post-remediation with dust wipes will be required. After completion of abatement work, a lead-based paint abatement clearance will be required.

Respectfully Submitted,



Nyire Grant  
 Risk Assessor, ID#D-I-T233827-23-00185  
 Encl: Floor Plan, Photographs;

# Floor Plan(s)



Floor 1

Lew Environmental Services - 3001 cromwell ct -Visual Inspection  
Prepared By: LEW Environmental Services, LLC  
01/24/2024

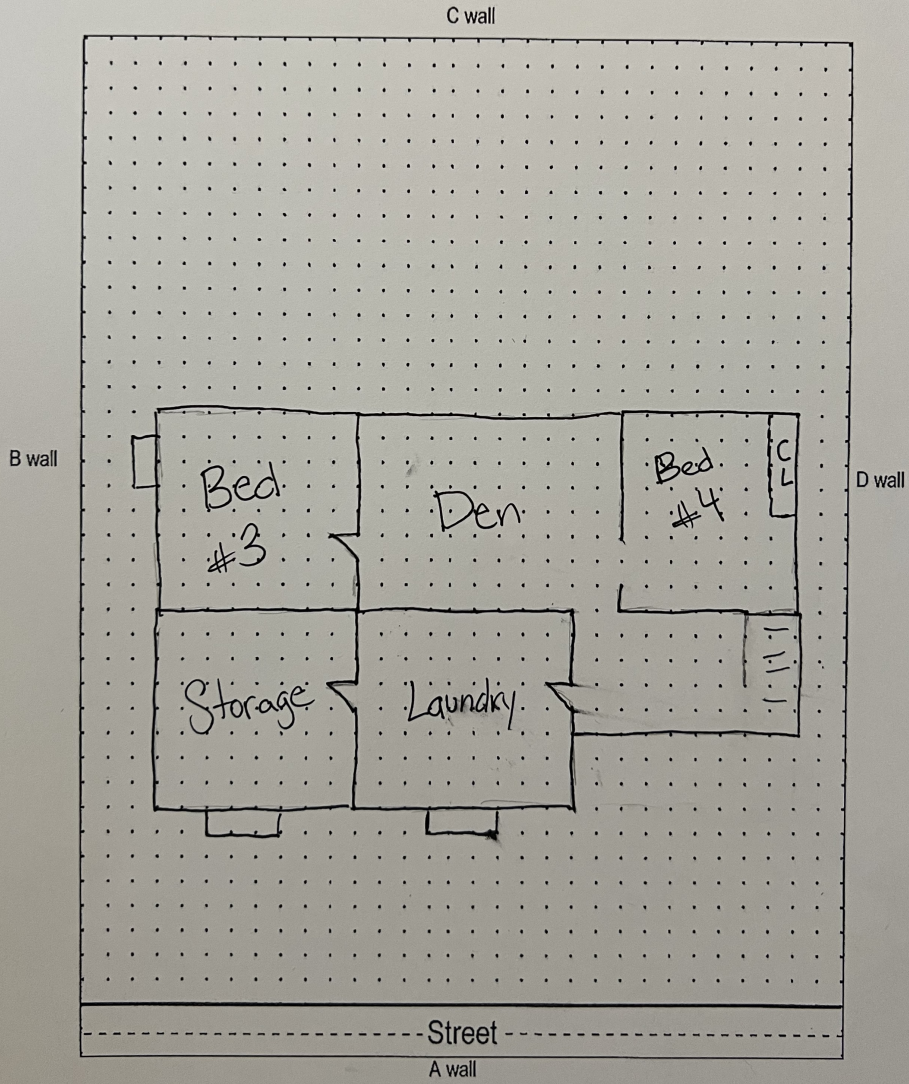


**LEW**  
Corporation

"The Environmental Company"

Route 46  
Arlene Hill, NJ 07803  
(908)654-8068  
(800)783-0567  
Fax (908)654-8069  
www.lewcorp.com

Site: 3001 Cromwell Ct, Hillsborough, NJ Basement



Floor 2

Lew Environmental Services - 3001 cromwell ct -Visual Inspection

Prepared By: LEW Environmental Services, LLC

01/24/2024

## Hazard Photos



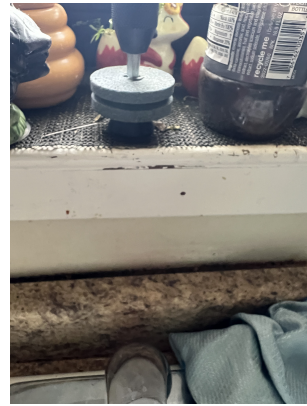
Hazard: Bedroom 1 | Door Casing | Deteriorated Paint



Hazard: Bedroom 1 | Door Casing | Deteriorated Paint



Hazard: Bedroom 2 | Door Casing | Deteriorated Paint



Hazard: Kitchen | Baseboard | Deteriorated Paint



Hazard: Stairwell 1 | Wall | Deteriorated Paint



Hazard: Storage Room | Pipe | Deteriorated Paint