



181 US Hwy 46
Mine Hill, NJ 07803
(908) 654-8068
(800) 783-0567
Fax 908-654-8069

Visual Paint Assessment Report

For: 806 Eves Dr, Apt 2-S, Hillsborough, NJ 08844
March 10, 2024

On 03/8/2024, LEW Environmental Services, LLC (NJCA 00015 E) performed a visual paint condition assessment for the presence of deteriorated paint, chips or dust from painting activities and paint residue on floors at 806 Eves Dr, Apt 2-S, Hillsborough, NJ 08844, (the “property”) in compliance with NJAC 5:28A. Only the interior of the rental dwelling was inspected. Exteriors were not part of the assessment. The visual assessment followed the protocols found in HUD’s Visual Assessment Training course.

Deteriorated paint, chips or dust from painting activities and paint residue on floors were observed on the following components/surfaces.

Room	Component	Hazard
Foyer	Entrance Door Casing A	Deteriorated Paint
Foyer	Closet Door B	Deteriorated Paint
Foyer	Closet Head Jamb B	Deteriorated Paint
Foyer	Closet Head Jamb D	Deteriorated Paint
Bathroom	Head Jamb B	Deteriorated Paint
Foyer	Bedroom Door Casing B	Deteriorated Paint
Bedroom Closet	Ceiling	Deteriorated Paint
Bedroom	Door Jamb D	Deteriorated Paint
Bedroom	Window Jamb B (drywall corner)	Deteriorated Paint
Bedroom	Closet Head Jamb C	Deteriorated Paint
Bedroom	AC Metal Sleeve B	Deteriorated Paint
Living Room	Wall A (Behind Couch)	Deteriorated Paint

Identified hazards shall be remediated using either abatement (permanent) or interim controls (temporary). Abatement shall be performed by a NJ Licensed lead abatement firm using licensed lead abatement supervisors and workers. Interim control work shall be performed by EPA RRP certified firms using an EPA certified RRP Renovator. After completion of interim control work, a lead-based paint post-remediation with dust wipes will be required. After completion of abatement work, a lead-based paint abatement clearance will be required.

Respectfully submitted,

Danny Feliciano

Danny Feliciano
Risk Assessor, NJDOH ID#033001

Encl: Photographs, Floor Plan



Photographs

ENTRANCE DOOR CASING A



CLOSET DOOR B (LEFT SIDE)



CLOSET HEAD JAMB B (LEFT SIDE)



BATHROOM HEAD JAMB B



CLOSET HEAD JAMB D (RIGHT SIDE)



BEDROOM DOOR CASING B



BEDROOM DOOR JAMB D



BEDROOM WINDOW JAMB B



BEDROOM CLOSET HEAD JAMB C





BEDROOM CLOSET CEILING



BEDROOM AC METAL SLEEVE B

A photograph of a living room wall behind a couch. The wall is off-white and shows some minor damage, including a small hole and some staining. A dark wooden frame with intricate carvings is visible on the right side. A portion of a grey, textured sofa is visible at the bottom. A decorative white lattice panel is mounted on the wall to the right.

LIVINGROOM WALL A (BEHIND COUCH)



Floor Plan



ENVIRONMENTAL SERVICES

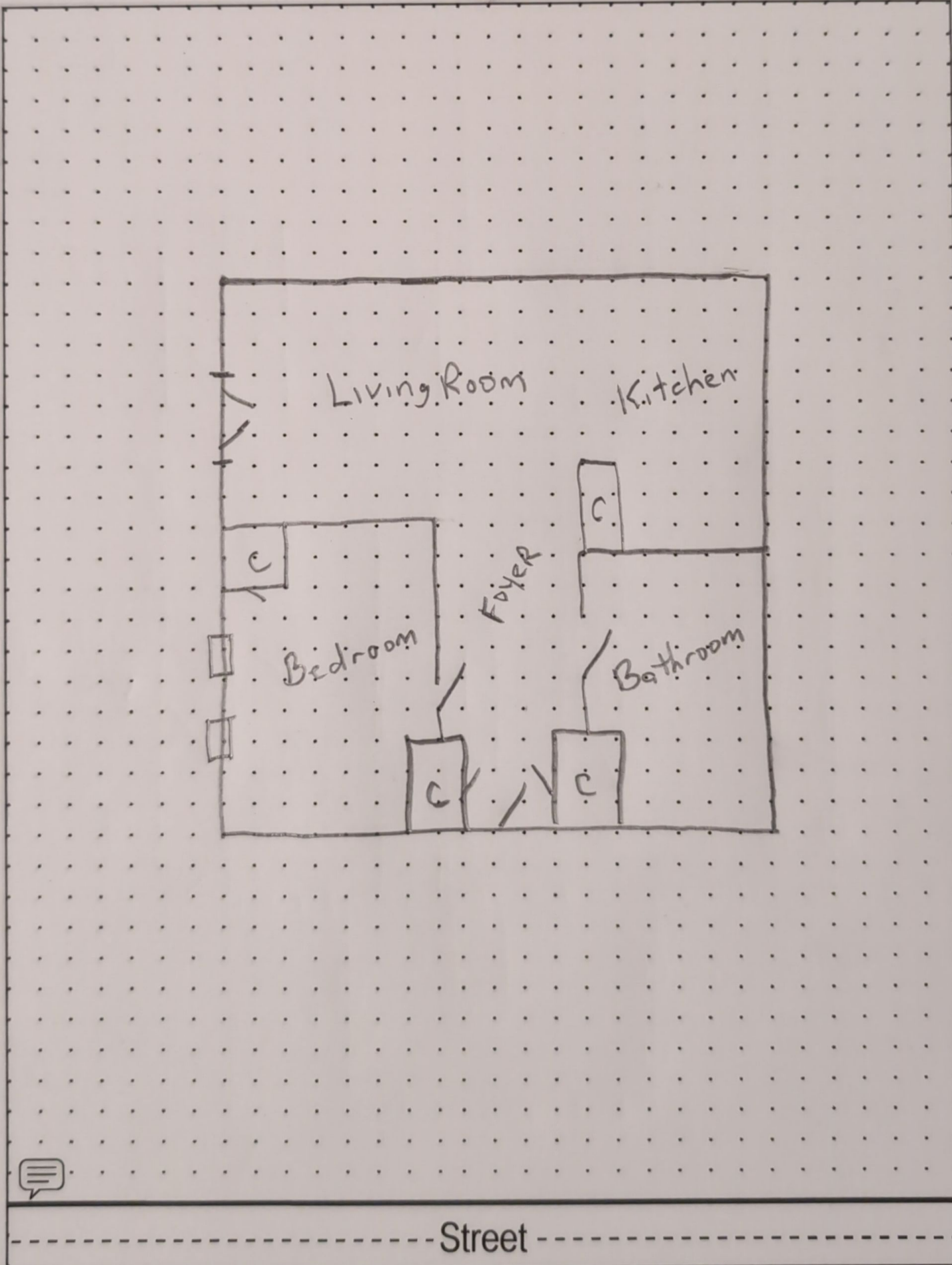
181 US Highway 46
Mine Hill, NJ 07803
(908)654-8068
(800)783-0567
Fax (908)654-8069
www.lewcorp.com

Site: 806 Eve Drive - Apt 2-S

C wall

B wall

D wall



Street

A wall

