



ENVIRONMENTAL SERVICES

181 US Hwy 46
Mine Hill, NJ 07830
(908) 654-8068
(800) 783-0567
Fax 908-654-8069

Visual Paint Assessment Report

For 25 Canal St Roxbury Township, NJ 07852
06/07/2024

On 05/24/24, LEW Environmental Services, LLC (NJDC 00015 E) performed a visual paint condition assessment for the presence of deteriorated paint, chips or dust from painting activities and paint residue on floors at 25 Canal St, (the "property") in compliance with NJAC 5:28A. Only the dwelling and common area interiors were included. Exteriors were not part of the assessment. The visual assessment followed the protocols found in HUD's Visual Assessment Training course.

Deteriorated paint, chips or dust from painting activities and paint residue on floors were observed on the following components/surfaces.

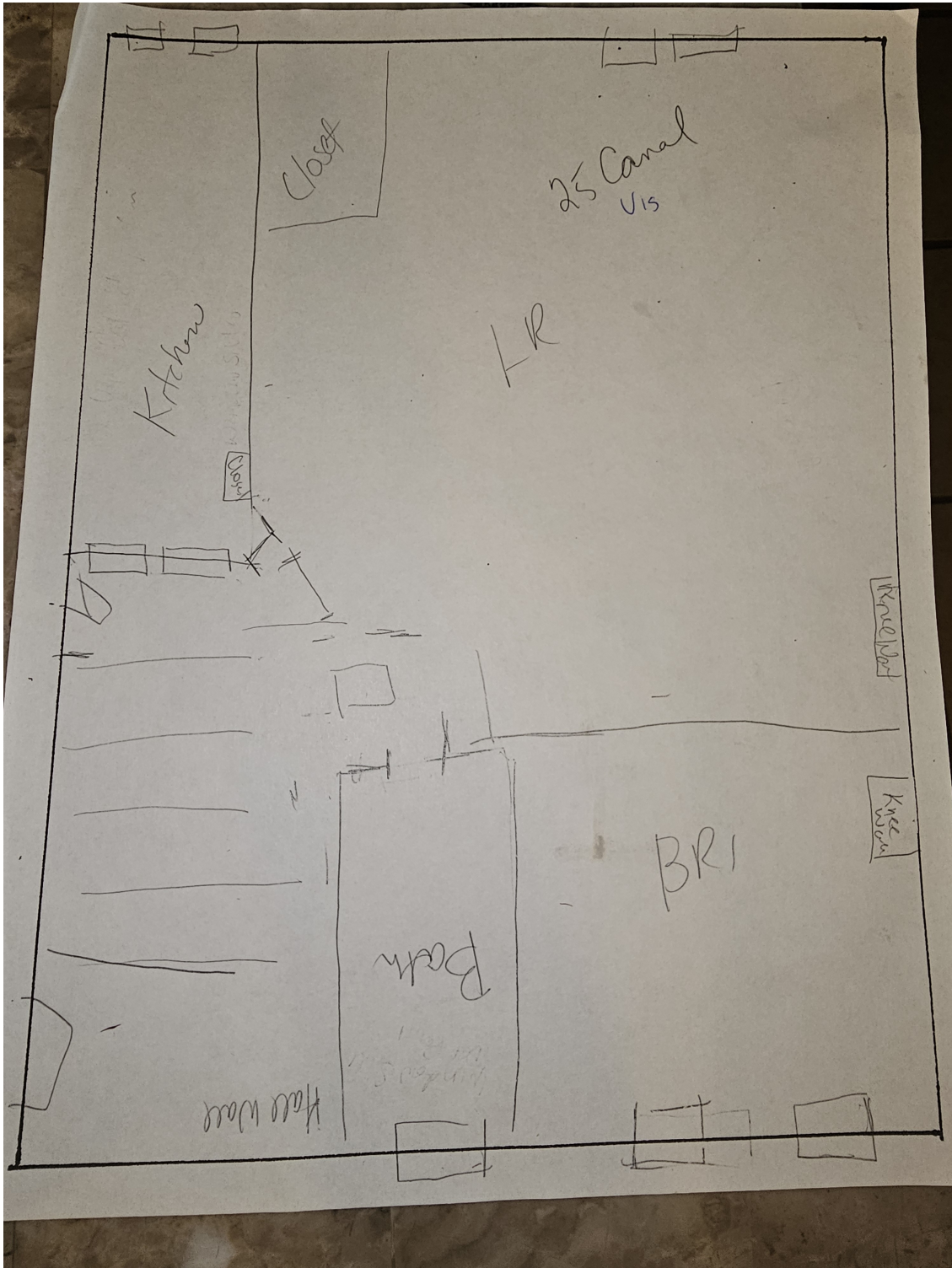
Room	Component	Hazard
Living Room	Wall	Deteriorated Paint
Kitchen	upper cabinets	Deteriorated Paint
Bathroom 1	Window Sill	Deteriorated Paint
Foyer	Baseboard	Deteriorated Paint

Identified hazards shall be remediated using either abatement (permanent) or interim controls (temporary). Abatement is permanent but has a higher cost, as Interim controls are temporary but can be much more affordable. Abatement shall be performed by a NJ Licensed lead abatement firm using licensed lead abatement supervisors and workers. You can find the list of NJ licensed lead abatement contractors at https://www.nj.gov/dca/divisions/codes/publications/pdf_lead/ld_abat_c.pdf. Interim control work shall be performed by EPA RRP certified firms using an EPA certified RRP Renovator. You can find certified EPA RRP contractors at <https://cdxappstest.epacdx.net/ocspp-oppt-leadhub/firm-location-search>. Select RRP Contractor, then NJ, then enter your zip code to search for contractors. After completion of interim control work, a lead-based paint post-remediation with dust wipes will be required. After completion of abatement work, a lead-based paint abatement clearance will be required..

Respectfully Submitted,

Gloria Washington
NJDOH Risk Assessor, ID#040601
Encl: Floor Plan, Photographs;

Floor Plan(s)



Floor 1

Low Environmental Services - 25 Canal St - Visual Inspection
Prepared By: LEW Environmental Services, LLC
06/07/2024

Hazard Photos



Hazard: Living Room | Wall | Deteriorated Paint



Hazard: Kitchen | upper cabinets | Deteriorated Paint



Hazard: Bathroom 1 | Window Sill | Deteriorated Paint



Hazard: Foyer | Baseboard | Deteriorated Paint

Low Environmental Services - 25 Canal St -Visual Inspection

Prepared By: LEW Environmental Services, LLC

06/07/2024