

## Visual Paint Assessment Report

For 21 Palmer Street Roxbury Township, NJ 07850  
 06/08/2024

On 05/30/24, LEW Environmental Services, LLC (NJDC 00015 E) performed a visual paint condition assessment for the presence of deteriorated paint, chips or dust from painting activities and paint residue on floors at 21 Palmer Street, (the “property”) in compliance with NJAC 5:28A. Only the dwelling and common area interiors were included. Exteriors were not part of the assessment. The visual assessment followed the protocols found in HUD’s Visual Assessment Training course.

Deteriorated paint, chips or dust from painting activities and paint residue on floors were observed on the following components/surfaces.

Room	Component	Hazard
Kitchen	Wall	Deteriorated Paint
Kitchen	Window Sill	Dust
Kitchen	Window Sill	Deteriorated Paint
Foyer	Door	Deteriorated Paint
Foyer	Baseboard	Deteriorated Paint
Foyer	Door	Deteriorated Paint
Foyer	Window Sill	Deteriorated Paint

Identified hazards shall be remediated using either abatement (permanent) or interim controls (temporary). Abatement is permanent but has a higher cost, as Interim controls are temporary but can be much more affordable. Abatement shall be performed by a NJ Licensed lead abatement firm using licensed lead abatement supervisors and workers. You can find the list of NJ licensed lead abatement contractors at [https://www.nj.gov/dca/divisions/codes/publications/pdf\\_lead/ld\\_abat\\_c.pdf](https://www.nj.gov/dca/divisions/codes/publications/pdf_lead/ld_abat_c.pdf). Interim control work shall be performed by EPA RRP certified firms using an EPA certified RRP Renovator. You can find certified EPA RRP contractors at <https://cdxappstest.epacdx.net/ocspp-oppt-leadhub/firm-location-search>. Select RRP Contractor, then NJ, then enter your zip code to search for contractors. After completion of interim control work, a lead-based paint post-remediation with dust wipes will be required. After completion of abatement work, a lead-based paint abatement clearance will be required..

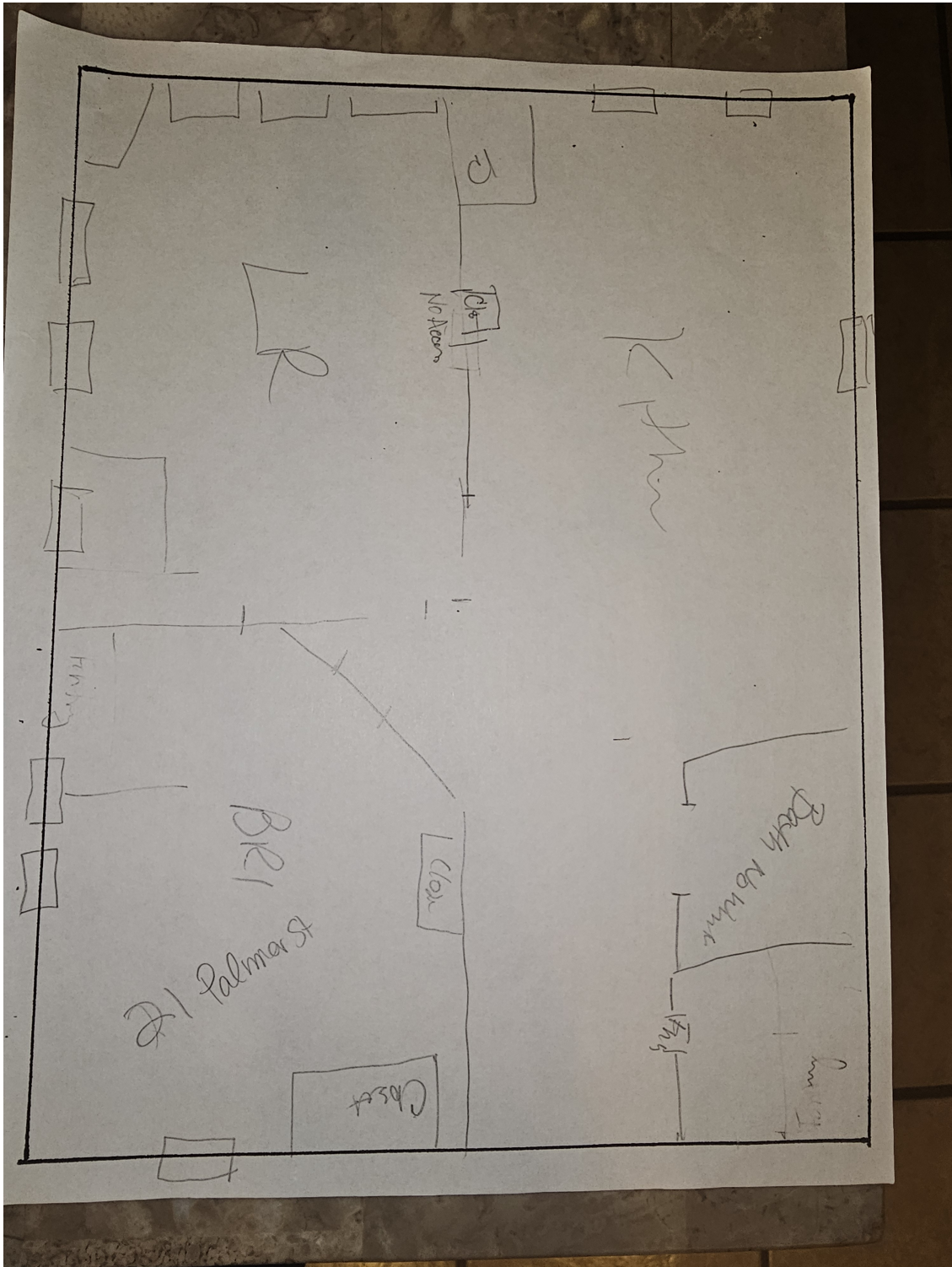
Respectfully Submitted,



Gloria Washington  
 NJDOH Risk Assessor, ID#040601

Encl: Floor Plan, Photographs;

# Floor Plan(s)



Floor 1

Lew Environmental Services - 21 Palmer Street - Visual Inspection  
Prepared By: LEW Environmental Services, LLC  
06/08/2024

## Hazard Photos



Hazard: Kitchen | Wall | Deteriorated Paint



Hazard: Kitchen | Window Sill | Dust



Hazard: Kitchen | Window Sill | Deteriorated Paint



Hazard: Foyer | Door | Deteriorated Paint



Hazard: Foyer | Baseboard | Deteriorated Paint



Hazard: Foyer | Door | Deteriorated Paint



Hazard: Foyer | Window Sill | Deteriorated Paint

Lew Environmental Services - 21 Palmer Street -Visual Inspection  
Prepared By: LEW Environmental Services, LLC  
06/08/2024