

## Visual Paint Assessment Report

For 14 Lincoln Place Freehold Borough, NJ 07728  
 06/10/2024

On 06/07/24, LEW Environmental Services, LLC (NJDC 00015 E) performed a visual paint condition assessment for the presence of deteriorated paint, chips or dust from painting activities and paint residue on floors at 14 Lincoln Place, (the "property") in compliance with NJAC 5:28A. Only the dwelling and common area interiors were included. Exteriors were not part of the assessment. The visual assessment followed the protocols found in HUD's Visual Assessment Training course.

Deteriorated paint, chips or dust from painting activities and paint residue on floors were observed on the following components/surfaces.

Room	Component	Hazard
Stairhall	Threshold	Deteriorated Paint
Stairhall	pipe and radiator	Deteriorated Paint
Living Room	Radiator	Deteriorated Paint
Bathroom	Radiator	Deteriorated Paint

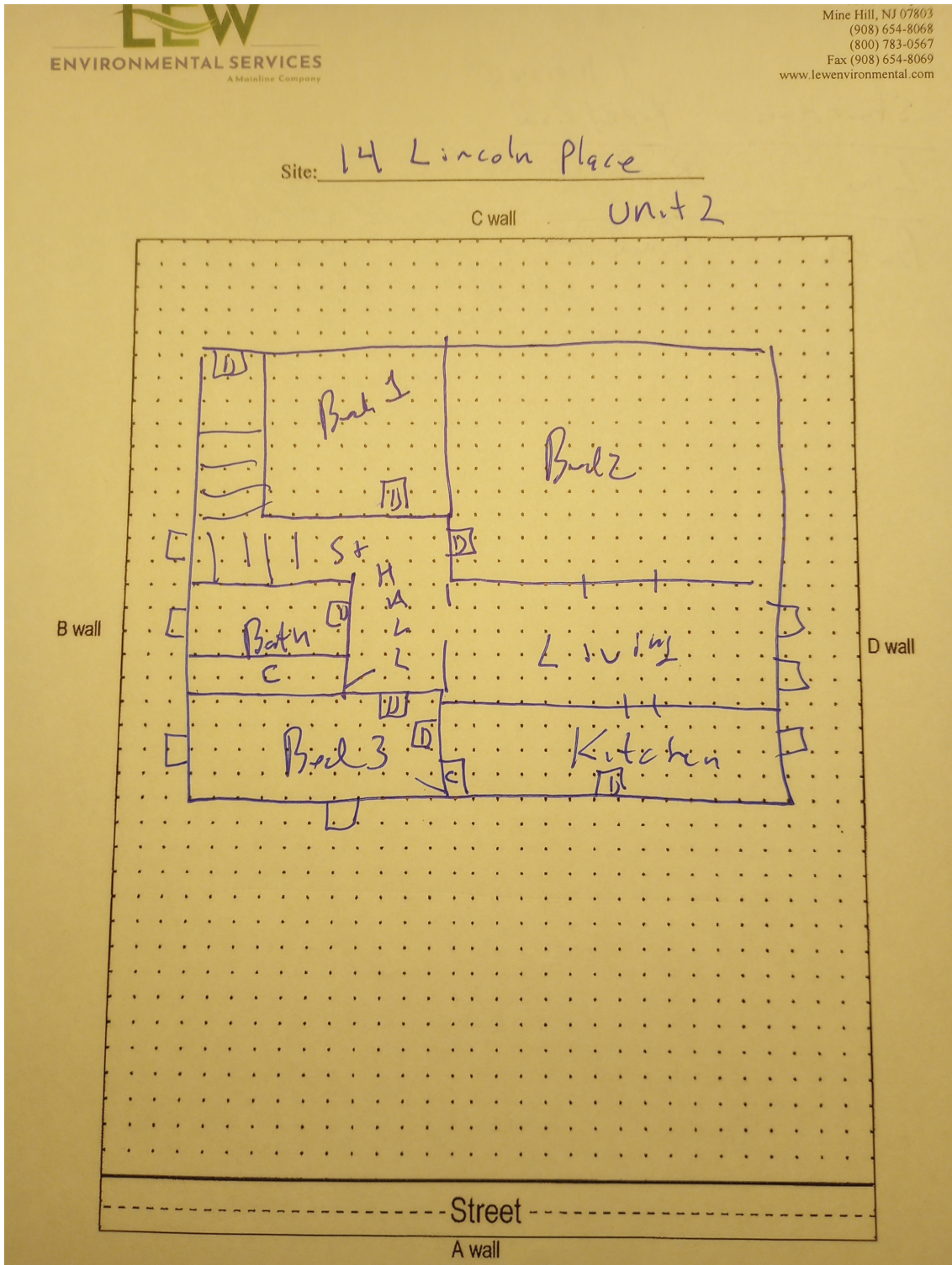
Identified hazards shall be remediated using either abatement (permanent) or interim controls (temporary). Abatement is permanent but has a higher cost, as Interim controls are temporary but can be much more affordable. Abatement shall be performed by a NJ Licensed lead abatement firm using licensed lead abatement supervisors and workers. You can find the list of NJ licensed lead abatement contractors at [https://www.nj.gov/dca/divisions/codes/publications/pdf\\_lead/ld\\_abat\\_c.pdf](https://www.nj.gov/dca/divisions/codes/publications/pdf_lead/ld_abat_c.pdf). Interim control work shall be performed by EPA RRP certified firms using an EPA certified RRP Renovator. You can find certified EPA RRP contractors at <https://cdxappstest.epacdx.net/ocspp-oppt-leadhub/firm-location-search>. Select RRP Contractor, then NJ, then enter your zip code to search for contractors. After completion of interim control work, a lead-based paint post-remediation with dust wipes will be required. After completion of abatement work, a lead-based paint abatement clearance will be required..

Respectfully Submitted,



Mark Franz  
 NJDOH Risk Assessor, ID#03265  
 Encl: Floor Plan, Photographs;

# Floor Plan(s)



Floor 1

Lew Environmental Services - 14 Lincoln Place - Visual Inspection  
Prepared By: LEW Environmental Services, LLC  
06/10/2024

## Hazard Photos



Hazard: Stairhall | Threshold | Deteriorated Paint



Hazard: Stairhall | pipe and radiator | Deteriorated Paint



Hazard: Living Room | Radiator | Deteriorated Paint



Hazard: Bathroom | Radiator | Deteriorated Paint

Low Environmental Services - 14 Lincoln Place -Visual Inspection  
Prepared By: LEW Environmental Services, LLC  
06/10/2024