

Visual Paint Assessment Report

For 14 Lincoln Place Freehold Borough, NJ 07728
 06/10/2024

On 06/07/24, LEW Environmental Services, LLC (NJDC 00015 E) performed a visual paint condition assessment for the presence of deteriorated paint, chips or dust from painting activities and paint residue on floors at 14 Lincoln Place, (the "property") in compliance with NJAC 5:28A. Only the dwelling and common area interiors were included. Exteriors were not part of the assessment. The visual assessment followed the protocols found in HUD's Visual Assessment Training course.

Deteriorated paint, chips or dust from painting activities and paint residue on floors were observed on the following components/surfaces.

Room	Component	Hazard
Bath	Radiator	Deteriorated Paint
Bath	Wall	Deteriorated Paint
Hallway	Door Jamb and Casing	Deteriorated Paint

Identified hazards shall be remediated using either abatement (permanent) or interim controls (temporary). Abatement is permanent but has a higher cost, as Interim controls are temporary but can be much more affordable. Abatement shall be performed by a NJ Licensed lead abatement firm using licensed lead abatement supervisors and workers. You can find the list of NJ licensed lead abatement contractors at https://www.nj.gov/dca/divisions/codes/publications/pdf_lead/ld_abat_c.pdf. Interim control work shall be performed by EPA RRP certified firms using an EPA certified RRP Renovator. You can find certified EPA RRP contractors at <https://cdxappstest.epacdx.net/ocspp-oppt-leadhub/firm-location-search>. Select RRP Contractor, then NJ, then enter your zip code to search for contractors. After completion of interim control work, a lead-based paint post-remediation with dust wipes will be required. After completion of abatement work, a lead-based paint abatement clearance will be required..

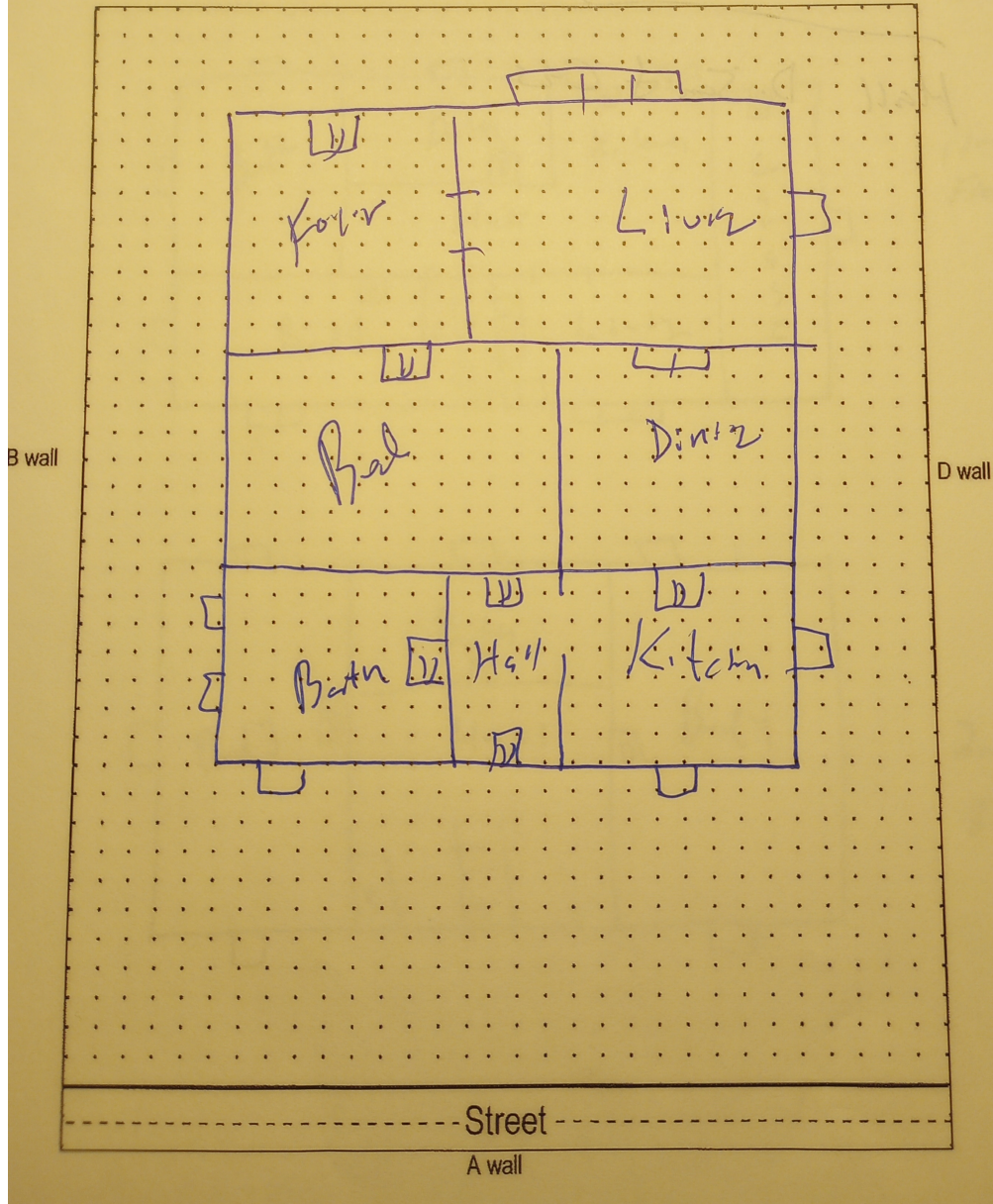
Respectfully Submitted,



Mark Franz
 NJDOH Risk Assessor, ID#03265
 Encl: Floor Plan, Photographs;

Floor Plan(s)

Site: 14 Lincoln Place
unit 1



Floor 1

Low Environmental Services - 14 Lincoln Place - Visual Inspection
Prepared By: LEW Environmental Services, LLC
06/10/2024

Hazard Photos



Hazard: Bath | Radiator | Deteriorated Paint



Hazard: Bath | Wall | Deteriorated Paint



Hazard: Hallway | Door Jamb and Casing | Deteriorated
Paint

Low Environmental Services - 14 Lincoln Place -Visual Inspection
Prepared By: LEW Environmental Services, LLC
06/10/2024