

Visual Paint Assessment Report

For 12 White Deer Plaza Sparta Township, NJ 07871
 06/10/2024

On 05/07/24, LEW Environmental Services, LLC (NJDC 00015 E) performed a visual paint condition assessment for the presence of deteriorated paint, chips or dust from painting activities and paint residue on floors at 12 White Deer Plaza, (the “property”) in compliance with NJAC 5:28A. Only the dwelling and common area interiors were included. Exteriors were not part of the assessment. The visual assessment followed the protocols found in HUD’s Visual Assessment Training course.

Deteriorated paint, chips or dust from painting activities and paint residue on floors were observed on the following components/surfaces.

Room	Component	Hazard
Foyer	ceiling	Deteriorated Paint
Bedroom 2	ceiling	Deteriorated Paint
Bedroom 2	Window Sill	Dust

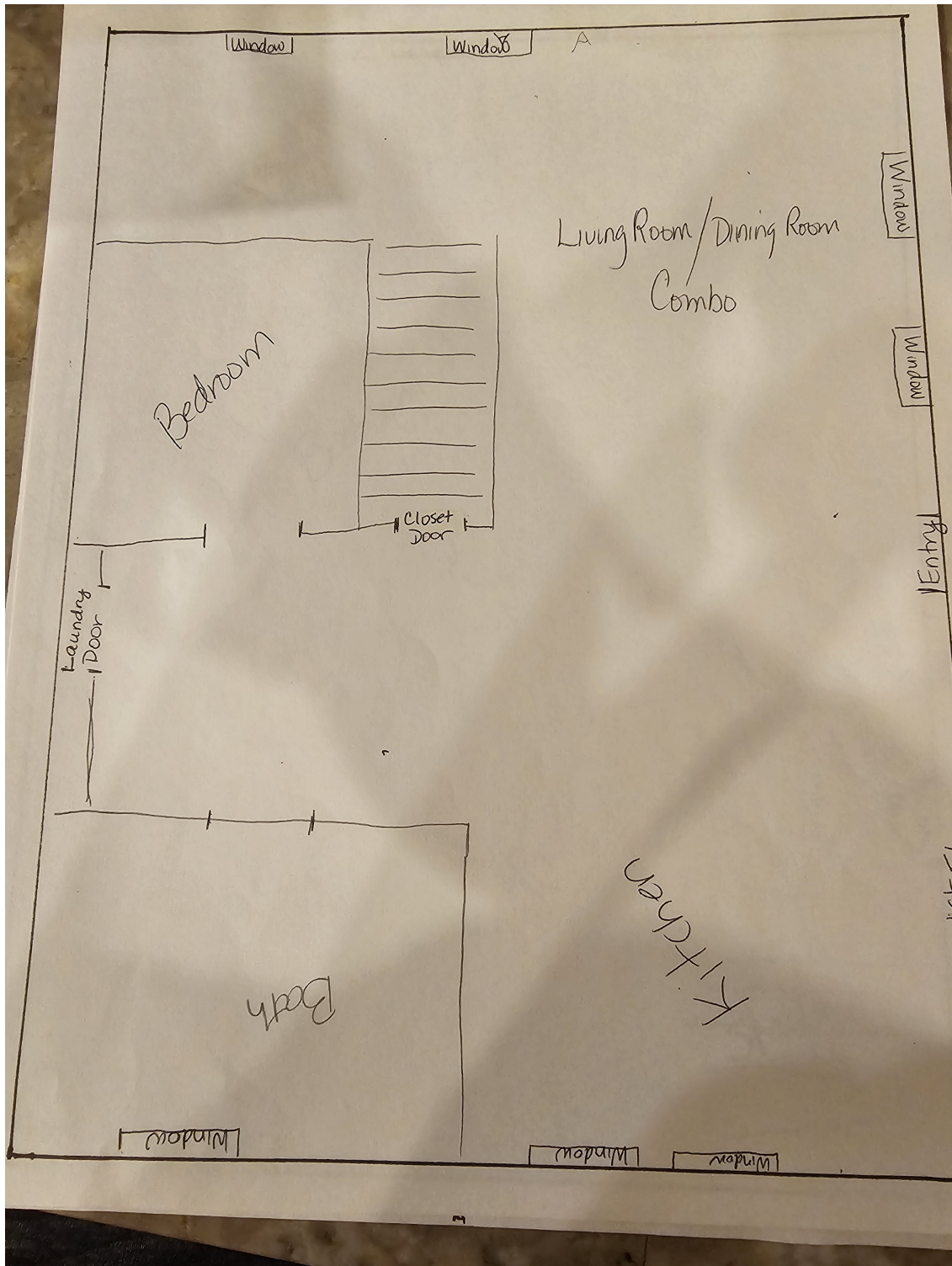
Identified hazards shall be remediated using either abatement (permanent) or interim controls (temporary). Abatement is permanent but has a higher cost, as Interim controls are temporary but can be much more affordable. Abatement shall be performed by a NJ Licensed lead abatement firm using licensed lead abatement supervisors and workers. You can find the list of NJ licensed lead abatement contractors at https://www.nj.gov/dca/divisions/codes/publications/pdf_lead/ld_abat_c.pdf. Interim control work shall be performed by EPA RRP certified firms using an EPA certified RRP Renovator. You can find certified EPA RRP contractors at <https://cdxappstest.epacdx.net/ocspp-oppt-leadhub/firm-location-search>. Select RRP Contractor, then NJ, then enter your zip code to search for contractors. After completion of interim control work, a lead-based paint post-remediation with dust wipes will be required. After completion of abatement work, a lead-based paint abatement clearance will be required..

Respectfully Submitted,



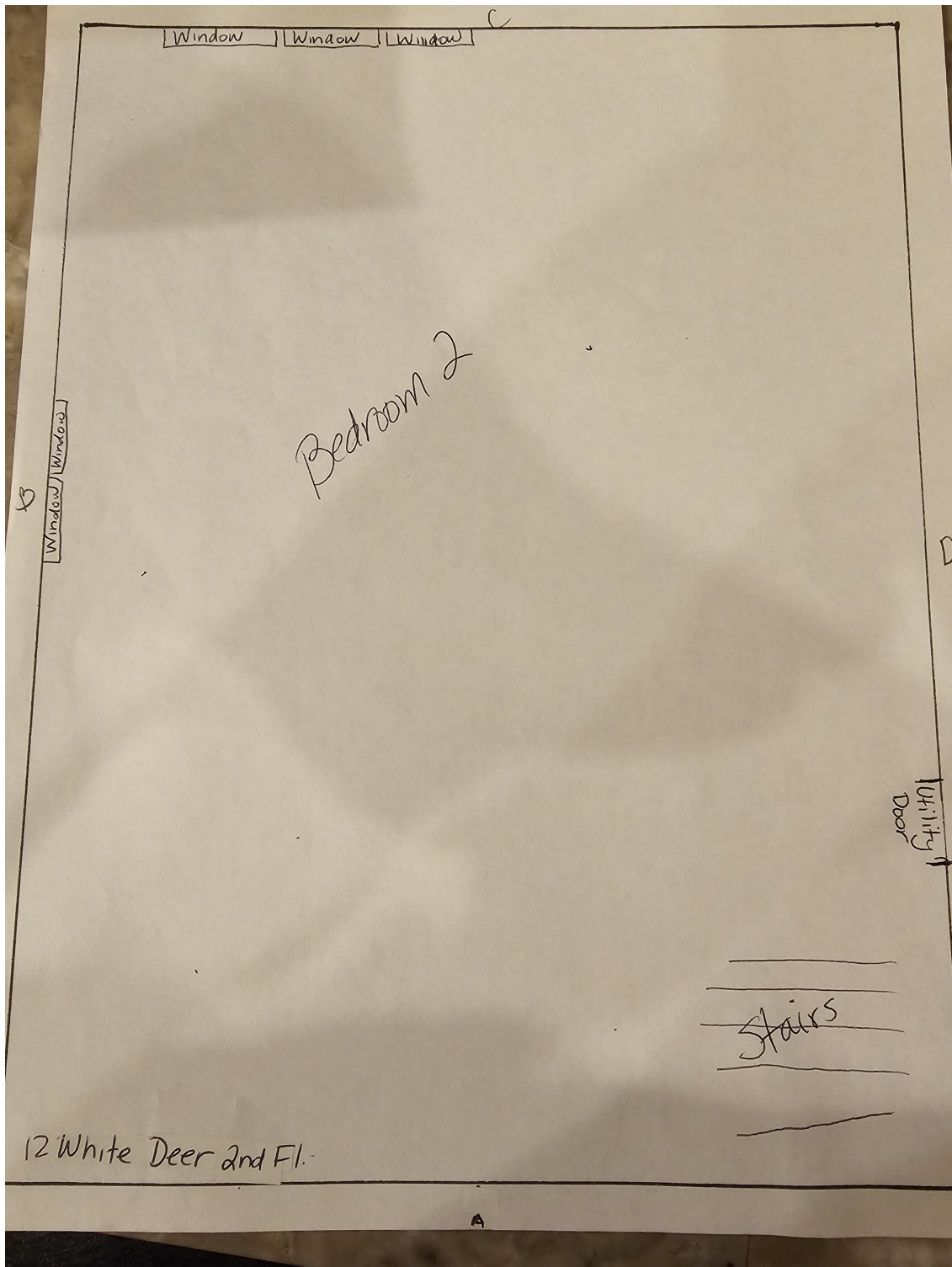
Gloria Washington
 NJDOH Risk Assessor, ID#040601
 Encl: Floor Plan, Photographs;

Floor Plan(s)



Floor 1

Low Environmental Services - 12 White Deer Plaza - Visual Inspection
Prepared By: LEW Environmental Services, LLC
06/10/2024



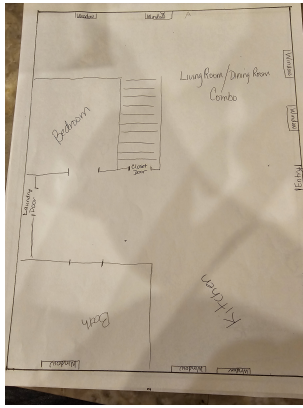
Floor 2

Lew Environmental Services - 12 White Deer Plaza -Visual Inspection

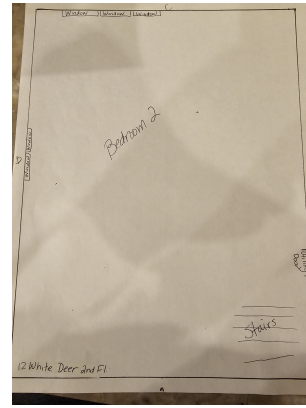
Prepared By: LEW Environmental Services, LLC

06/10/2024

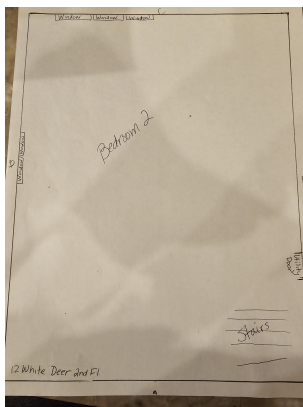
Hazard Photos



Hazard: Foyer | ceiling | Deteriorated Paint



Hazard: Bedroom 2 | ceiling | Deteriorated Paint



Hazard: Bedroom 2 | Window Sill | Dust

Low Environmental Services - 12 White Deer Plaza -Visual Inspection
Prepared By: LEW Environmental Services, LLC
06/10/2024