



181 US Hwy 46
Mine Hill, NJ 07830
(908) 654-8068
(800) 783-0567
Fax 908-654-8069

Visual Paint Assessment Report

For 110 Township Line Road Hillsborough Township, NJ
12/14/2023

On 12/14/23, LEW Environmental Services, LLC (NJDC A 00015 E) performed a visual paint condition assessment for the presence of deteriorated paint, chips or dust from painting activities and paint residue on floors at 110 Township Line Road, (the “property”) in compliance with NJAC 5:28A. Only the dwelling and common area interiors were included. Exteriors were not part of the assessment. The visual assessment followed the protocols found in HUD’s Visual Assessment Training course.

Deteriorated paint, chips or dust from painting activities and paint residue on floors were observed on the following components/surfaces.

| Room | Component | Hazard |
|-------------|-------------------------------|--------------------|
| Living Room | Door | Deteriorated Paint |
| Office | Closet Shelf and Clothes Pole | Deteriorated Paint |
| Kitchen | Door | Deteriorated Paint |
| Kitchen | Door | Deteriorated Paint |
| Bedroom 1 | Door | Deteriorated Paint |
| Bathroom 1 | Radiator | Deteriorated Paint |
| Bathroom 1 | Door | Deteriorated Paint |
| Bathroom 1 | Window Sill | Deteriorated Paint |
| Living Room | Door Stop | Deteriorated Paint |
| Bedroom 2 | Door Jamb | Deteriorated Paint |
| Bedroom 2 | Door Casing | Deteriorated Paint |
| Bedroom 2 | Ceiling | Deteriorated Paint |
| Basement | Stair Tread | Deteriorated Paint |
| Basement | Wall | Deteriorated Paint |
| Basement | Door | Deteriorated Paint |

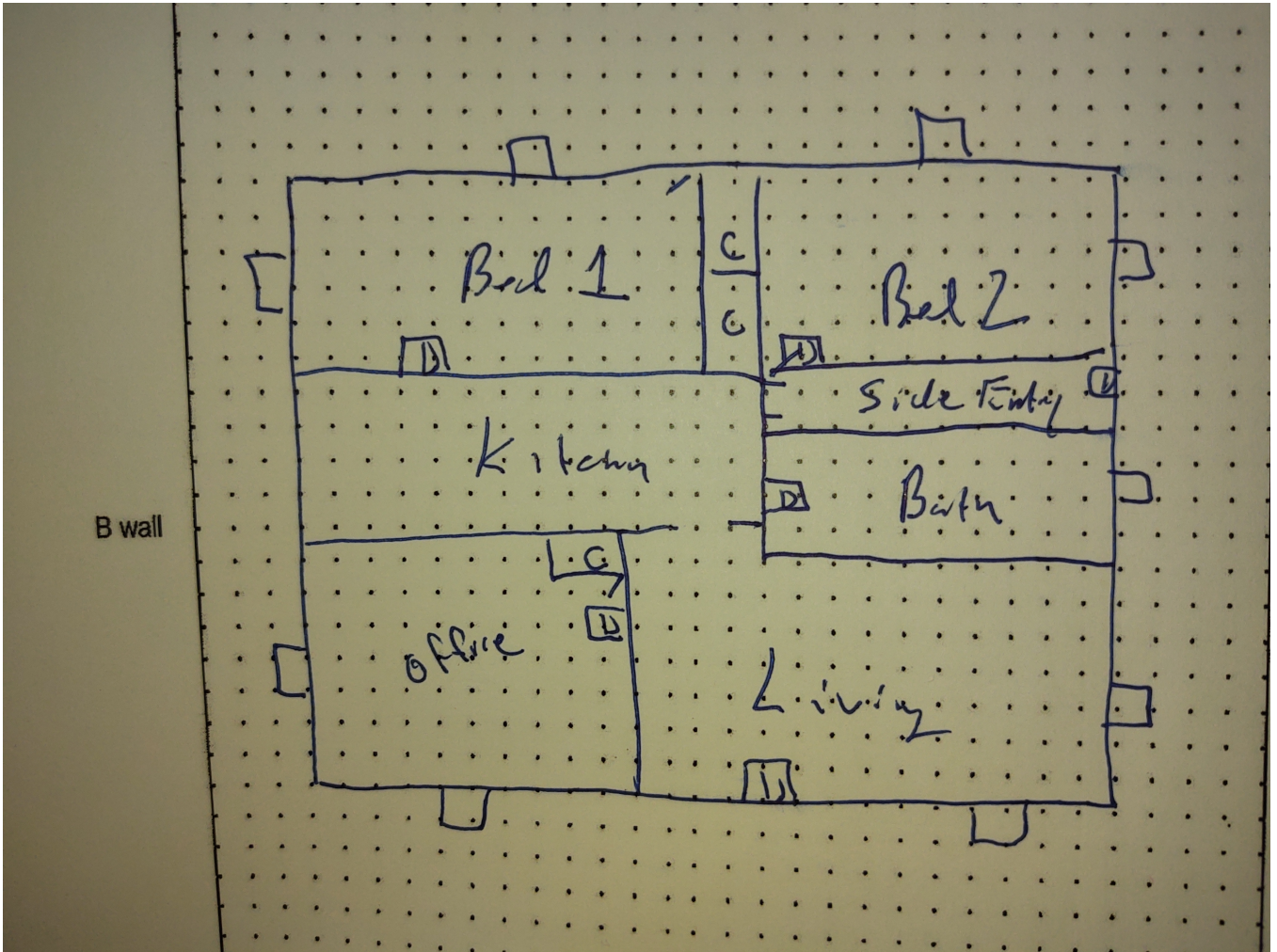
Identified hazards shall be remediated using either abatement (permanent) or interim controls (temporary). Abatement shall be performed by a NJ Licensed lead abatement firm using licensed lead abatement supervisors and workers. Interim control work shall be performed by EPA RRP certified firms using an EPA certified RRP Renovator. After completion of interim control work, a lead-based paint post-remediation with dust wipes will be required. After completion of abatement work, a lead-based paint abatement clearance will be required.

Respectfully Submitted,

A handwritten signature in black ink, appearing to read 'Mark Franz', with a long horizontal flourish extending to the right.

Mark Franz
Risk Assessor, NJDOH ID#03265
Encl: Floor Plan, Photographs;

Floor Plan



Floor 1

Low Environmental Services - 110 Township Line Road - Visual Inspection
Prepared By: LEW Environmental Services, LLC
12/14/2023

Hazard Photos



Hazard: Living Room | Door | Deteriorated Paint



Hazard: Office | Closet Shelf and Clothes Pole | Deteriorated Paint



Hazard: Kitchen | Door | Deteriorated Paint



Hazard: Kitchen | Door | Deteriorated Paint



Hazard: Bedroom 1 | Door | Deteriorated Paint



Hazard: Bathroom 1 | Radiator | Deteriorated Paint



Hazard: Bathroom 1 | Door | Deteriorated Paint



Hazard: Bathroom 1 | Window Sill | Deteriorated Paint



Hazard: Living Room | Door Stop | Deteriorated Paint



Hazard: Bedroom 2 | Door Jamb | Deteriorated Paint



Hazard: Bedroom 2 | Door Casing | Deteriorated Paint



Hazard: Bedroom 2 | Ceiling | Deteriorated Paint



Hazard: Basement | Stair Tread | Deteriorated Paint



Hazard: Basement | Wall | Deteriorated Paint



Hazard: Basement | Door | Deteriorated Paint

Lew Environmental Services - 110 Township Line Road -Visual Inspection
Prepared By: LEW Environmental Services, LLC
12/14/2023